

Manual for SMART-BUS IPHONE App PRO

Manual Version: 1.7

Updated Date: Sep 3, 2013

Copyright: SMART GROUP

SMART-BUS IPHONE App version required: PRO V2.0 Apr 28, 2013 or above

1. Download & Install SMART-BUS IPHONE App from Apple Store	4
2. Install software "SQLite Expert Personal" on your computer.....	4
3. Getting the database file "Database.sqlite3"	5
3.1 get Database file by iTools.....	5
3.2 change database by FTP	8
4. Open File Database.sqlite3.....	15
5. Zone Settings	18
5.1 Add Zone.....	28
5.2 Modify Zone.....	29
5.3 Delete zone	30
6. Systems in Zone	30
7. Lights in Zone	33
7.1 Add light 1 "surround" ,	34
7.2 Modify Light of zone	35
7.2 Set "CanDim" value as 2	35
8. AC in Zone	36
8.1 Add more AC in one zone	37
9. Z-Audio Settings	38
10. Media in Zone	39
10.1 TV.....	39
10.2 Apple TV	41
10.3 DVD	44
10.4 Projector.....	46
10.5 SAT. /Cable	47
11. Shades in Zone.....	49
11.1 System settings if has shade in zone.....	50
11.2 Add shades to the Zone select table ShadesInZone.....	51
11.3 Commands for the shade.....	52
12. Mood Recording in Zone	58
12.1 Record New Mood	58
12.2 Edit Existed Mood	66
12.3 Delete existed mood	71
13. Macro Buttons	71
13.1 Add Macro button	71

13.2 Add commands for macro button.....	74
14. Security	75
15. Camera.....	77
15.1 Web camera.....	77
15.2 Camera from Foscam.....	78
15.2.1 Adding video code type mjpeg camera Press.....	81
15.2.2 Adding video code type is H264 camera.....	82
15.2.3 Edit camera.....	84
16. Central control lights.....	84
16.1 Add central control light.....	84
16.2 Add commands for control lights	85
17 Fan.....	85
17.1 Add fan system in table 'SystemInZone'	86
17.2 Add Fan control Module to FanInZone	86
20. Download database to IPHONE/IPAD from FTP Server	87

S/N	TABLE OF CONTENT
1	Download & Install SMART-BUS IPHONE App from Apple Store
2	Install software “ SQLite Expert Personal ” on your computer

3	Getting the database file "Database.sqlite3"
3.1	Change the database by iTools
4	Open File Database.sqlite3
5	Zone Settings
6	Systems in Zone
7	Lights in Zone
7.1	Add LED light
8	AC in Zone
8.1	Add many AC
9	Z-Audio Settings
10	Media in Zone
10.1	TV
10.2	Apple TV
10.3	DVD
10.4	Projector
10.5	SAT. /Cable
11	Shades in Zone
11.1	System settings if has shade in zone
11.2	Add shades to the Zone
11.3	Commands for the shade
12	Mood Recording in Zone
13	Macro buttons
14	Security
15	Camera
15.1	Web Camera
15.2	Camera from Foscam
16	Central control lights
17	Fan
20	Download database to IPHONE/IPAD from FTP Server

1. Download & Install SMART-BUS IPHONE App from Apple Store

SMART-BUS IPHONE App is available on Apple Store,
Click Apple Store Icon on IPAD/IPHONE,



Search the keyword “smart G4”



Click the button INSTALL above

2. Install software “SQLite Expert Personal” on your computer

If you don't have SQLite software, it is available on www.smarthomebus.com website, here is the link:

<http://smarthomebus.com/dealers/Softwares/SQLiteExpertPersSetup%20for%20windows.exe>

Download and install it on your computer

3. Getting the database file “Database.sqlite3”

if you are first time program the Smart-BUS IPHONE app or don't have the database for smart-bus IPHONE app, you can take the database from Smart-BUS IPHONE app,

3.1 get Database file by iTools

3.1.1 Download itunes from Apple

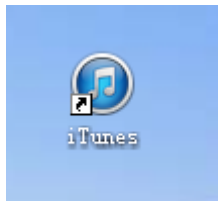
<http://www.apple.com.cn/itunes/download/>

3.1.2 Installing itunes on computer

Double click iTunesSetup.exe



When finished you will see the Icon of iTunes on your PC desktop

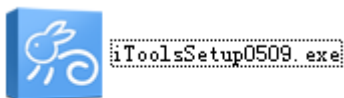


3.1.3 Download iTools

<http://itools.hk/>

3.1.4 Installing iTools on computer

Double click iToolsSetup0509.exe



3.1.5 Change database with iTools

Connecting your iPhone/iPad to your Computer with line
Your iTools will be starting and you will see the view like the image below



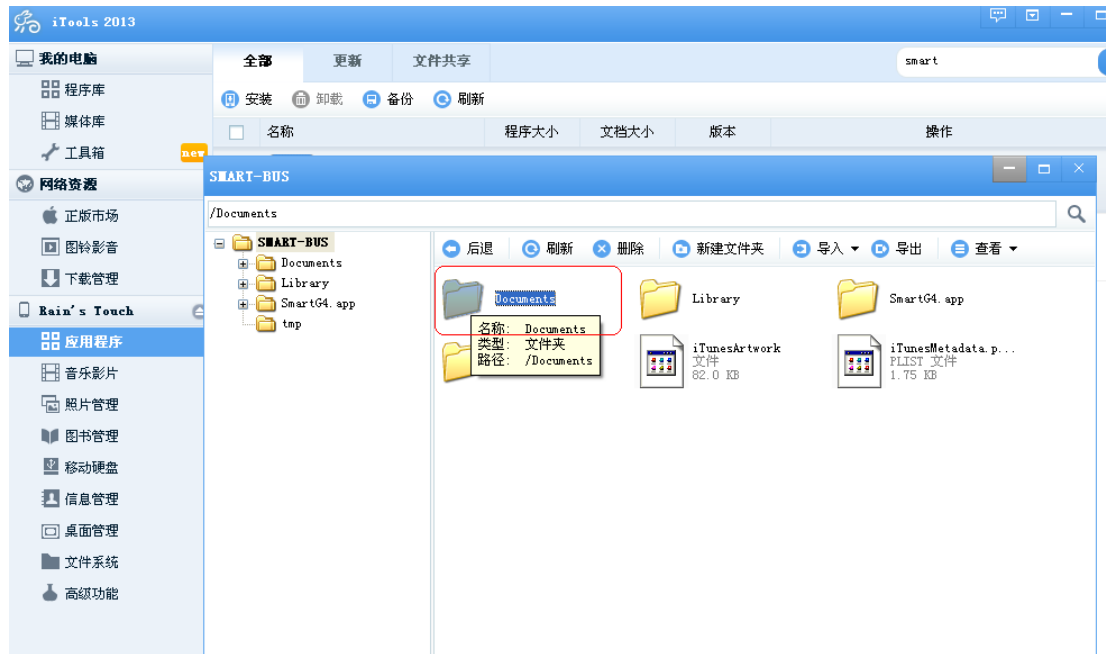
Click the apps as the image show, then your will see the view as the image below



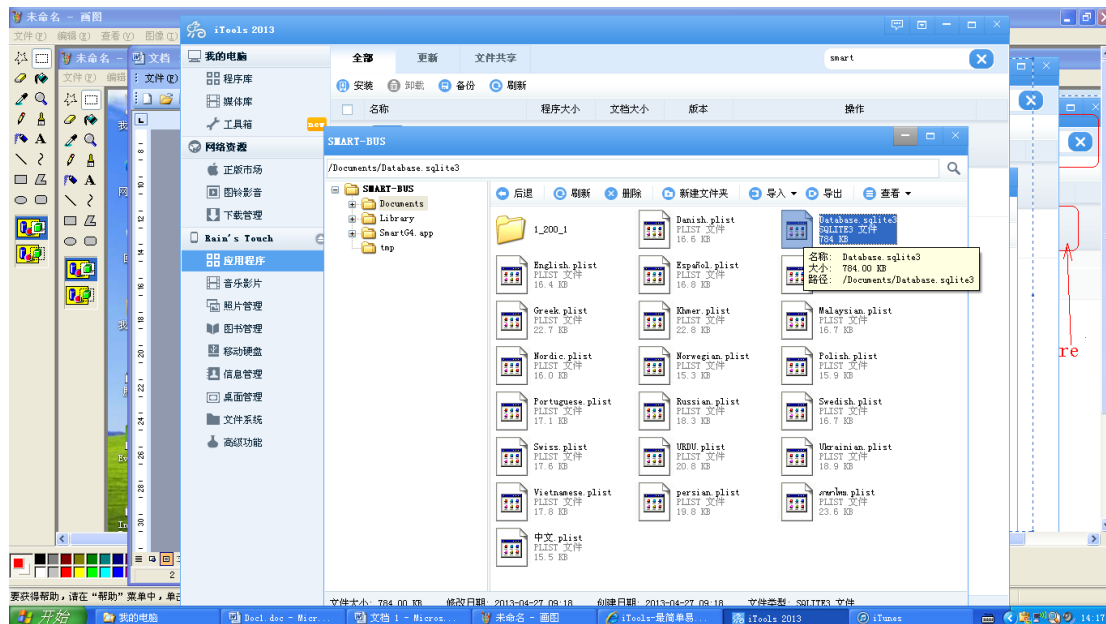
Input "smart " in the search bar

Click the last button as the above image show step 2

You will see the view as below



DoubleClick the folder“Documents”, you will see the view as the image below:

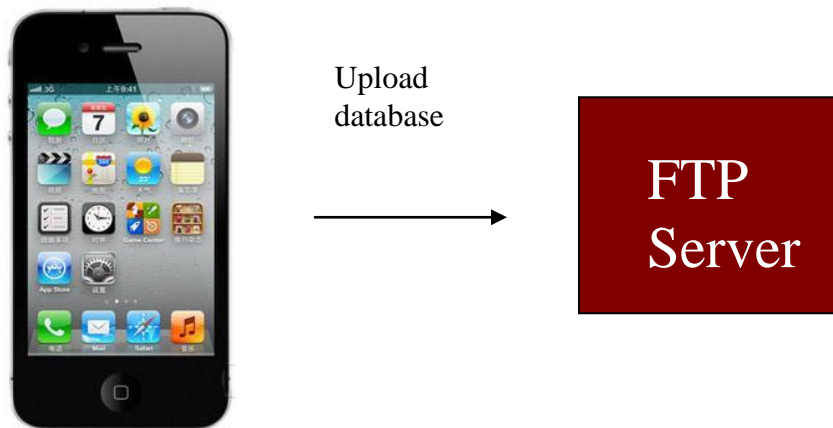


Then you will see the file “Database.sqlite3”,

Now you can copy the Database.sqlite3 to your computer or copy it to your iPhone/iPad by dragging.

Notice: The Database file name should be "Database.sqlite3"

3.2 change database by FTP



Step 1: Install FTP software on your computer

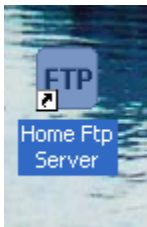
The FTP software is available from the link below:

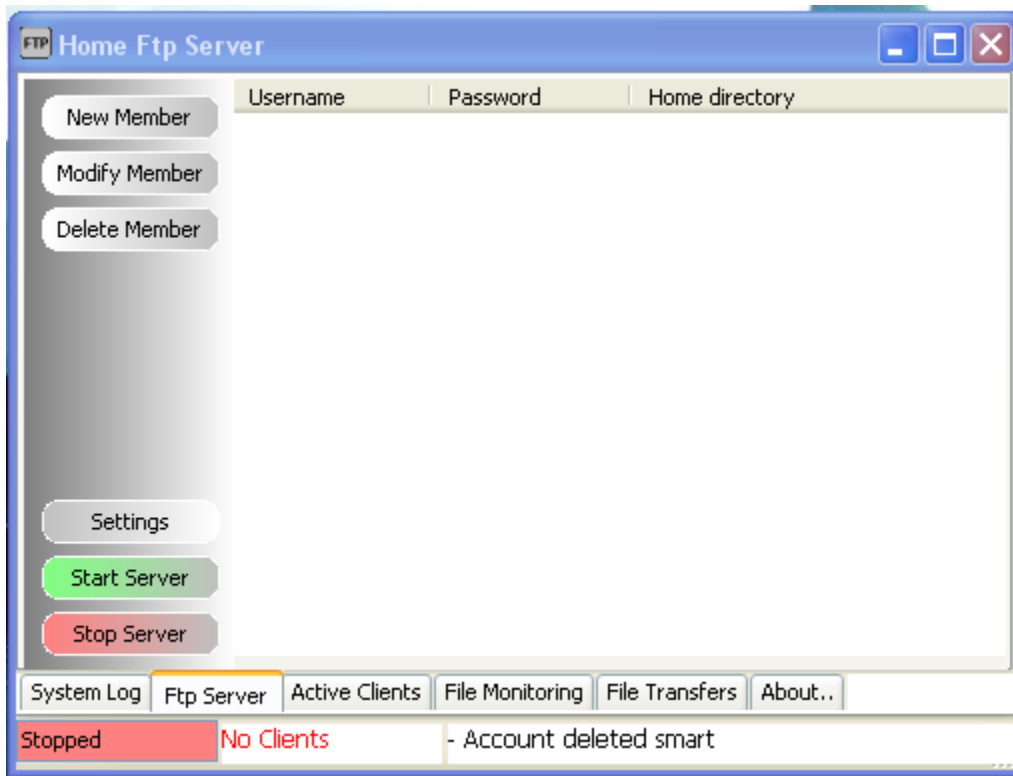
<http://smarthomebus.com/dealers/Softwares/HomeFtpServerInstall.exe>

After download just install it.

Step 2: Setup FTP Server

Run the FTP software on desktop





Click the button **New Member**

Ftp Client Editor

General Virtual Directories File Control

User name:

Password:

Home directory:

Download Speed: Bytes/s, 0 = No Limitation

Upload Speed: Bytes/s, 0 = No Limitation

Disk space: Bytes, 0 = Limited to disk size

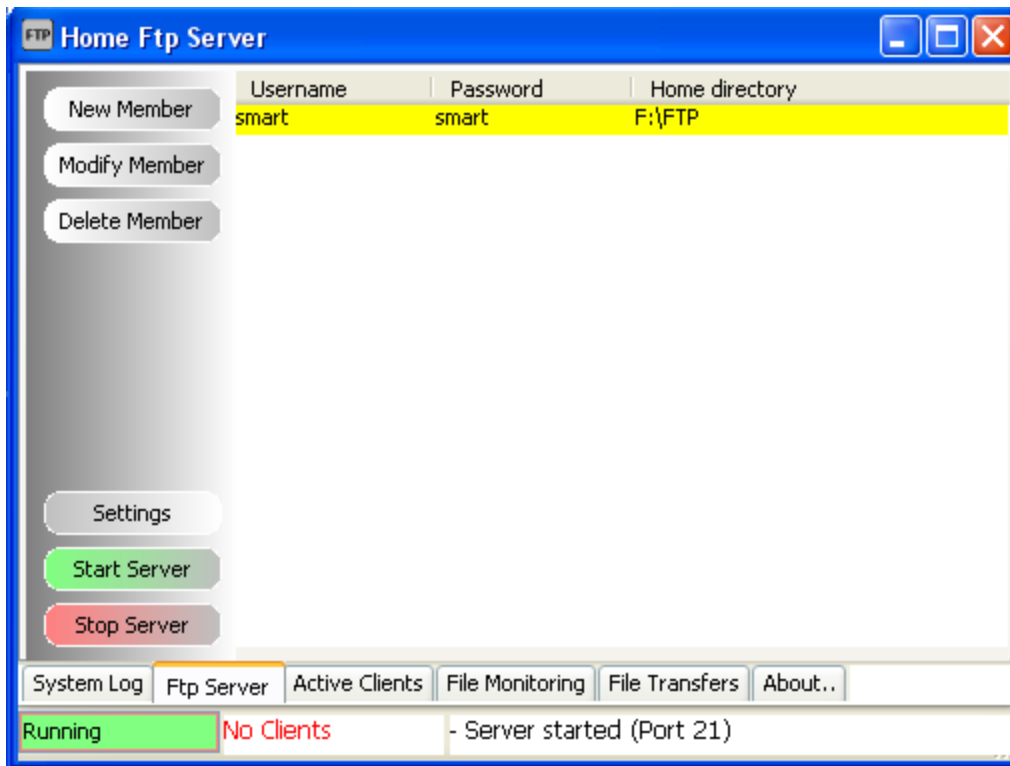
Home Directory:	Virtual Directories (if any defined):
<input checked="" type="checkbox"/> Allow download files	<input checked="" type="checkbox"/> Allow download files
<input checked="" type="checkbox"/> Allow upload files	<input type="checkbox"/> Allow upload files
<input checked="" type="checkbox"/> Allow renaming files (or directories)	<input type="checkbox"/> Allow renaming files (or directories)
<input checked="" type="checkbox"/> Allow deleting files	<input type="checkbox"/> Allow deleting files
<input checked="" type="checkbox"/> Allow change directory	<input checked="" type="checkbox"/> Allow change directory
<input checked="" type="checkbox"/> Allow creating directories	<input type="checkbox"/> Allow creating directories
<input checked="" type="checkbox"/> Allow deleting directories	<input type="checkbox"/> Allow deleting directories

Input the username: smart

Password: smart

Choose Home directory,

Then click button **Apply**

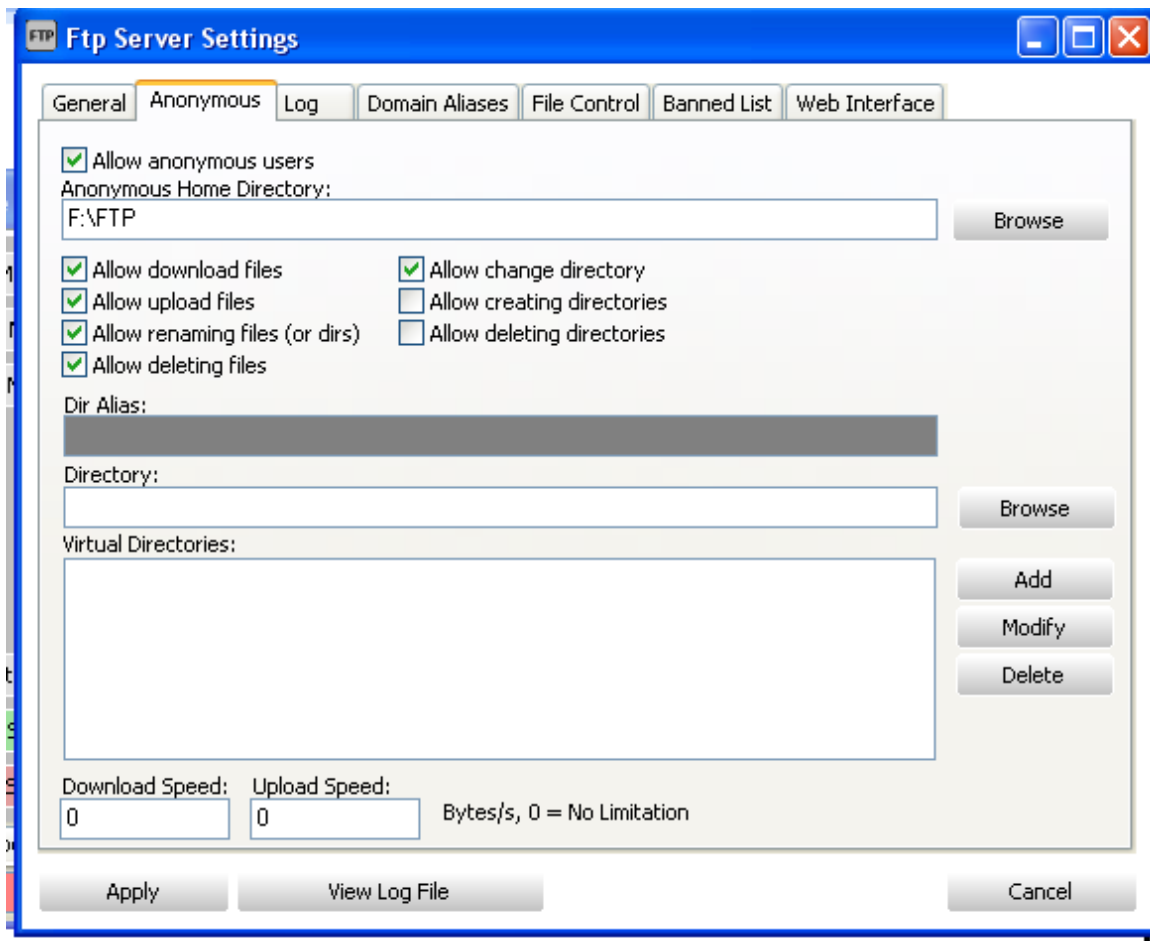


Click the button **Start Server**, if the server is started, the text **Running** is shown on the status bar.

Click button **Settings**



Select **Anonymous**



Select the directory of FTP,
check Allow download files
Check Allow deleting files and so on like above.

Step 3: Upload database to FTP Server

To go to settings page, click the G4 icon on top right corner on main page



Click the button **Database Upload & Download**

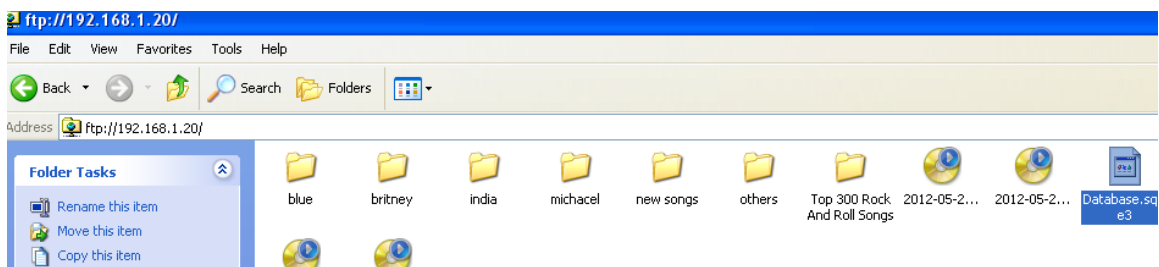


Input FTP Server Address and username and password like the below, then click button **Save**



Click button **Upload** above

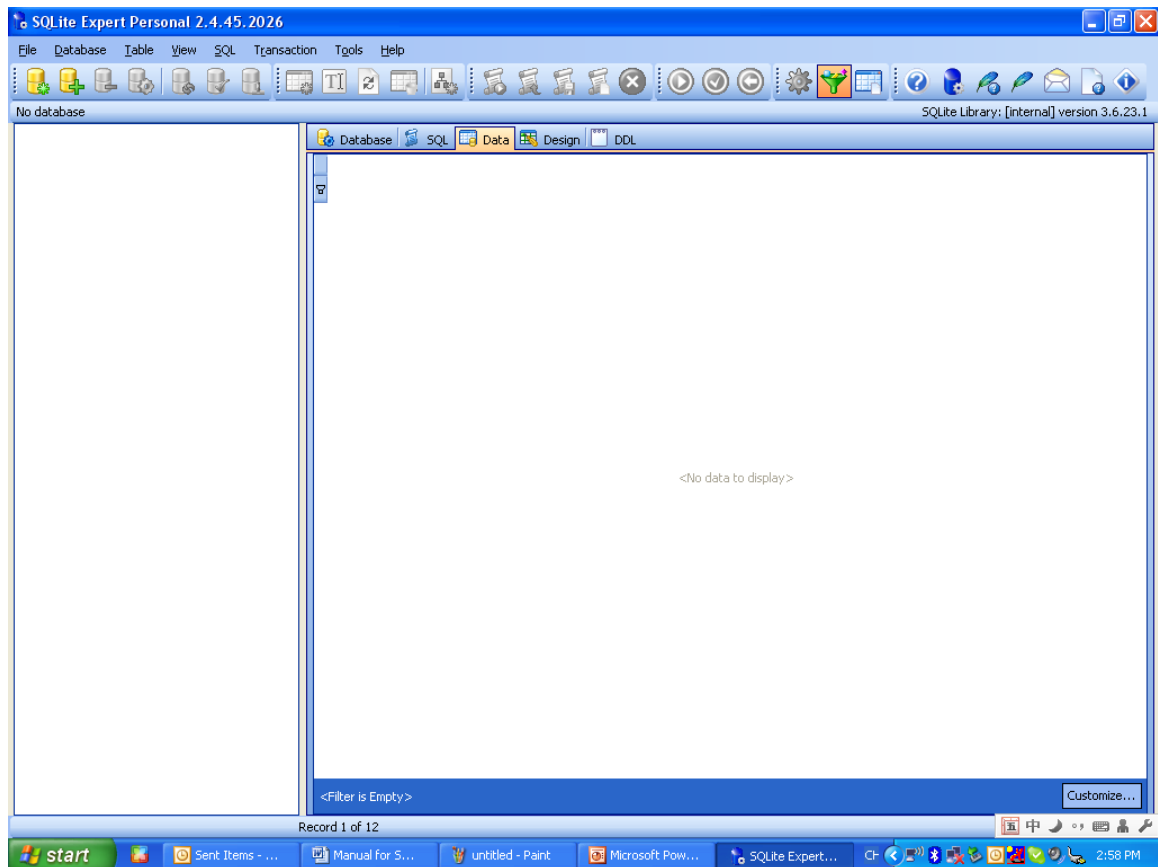
On FTP server, the file Database.sqlite3 is found when the uploading is done.



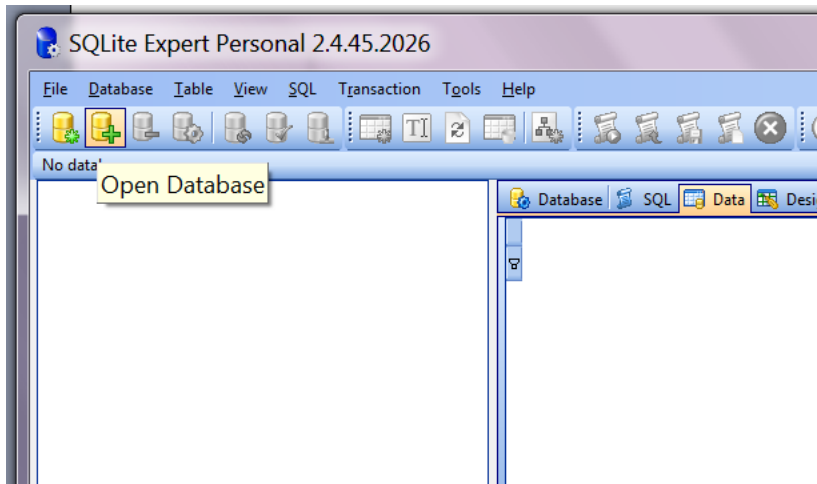
4. Open File Database.sqlite3

Before making any modification, Backup database is highly recommended

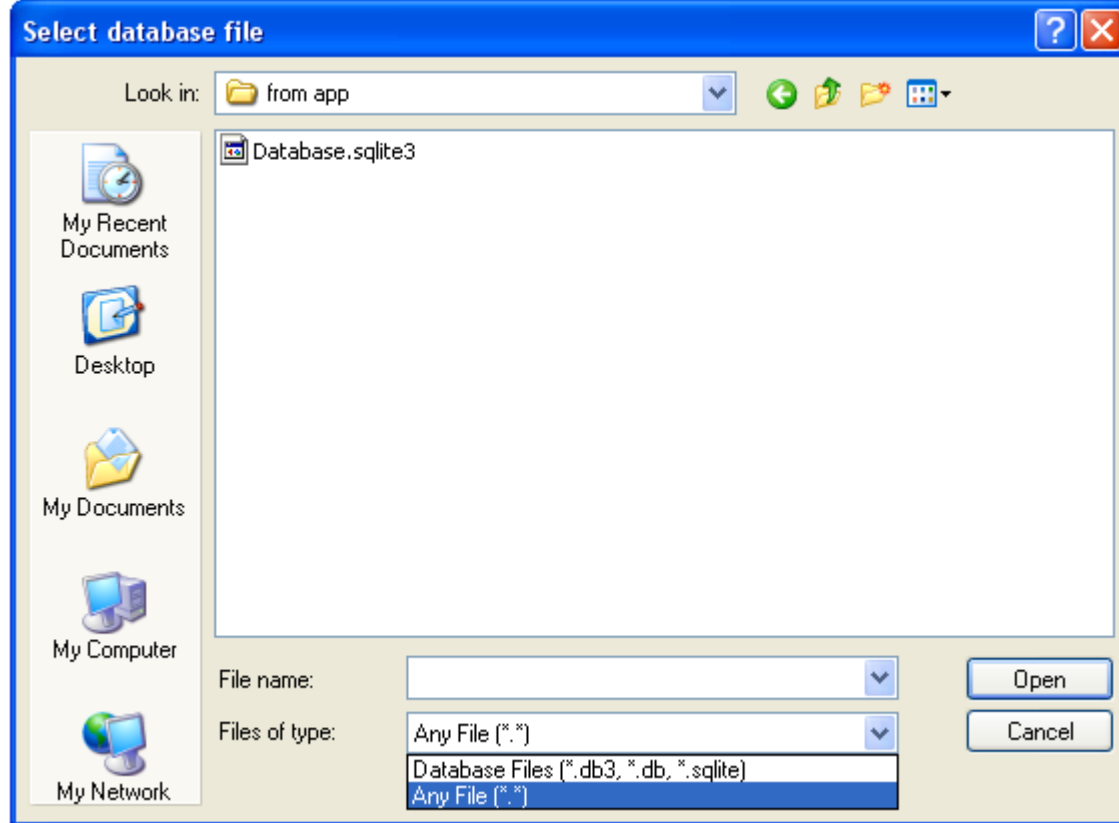
run SQLite software on your computer desktop



Click the button “Open Database” on the toolbar

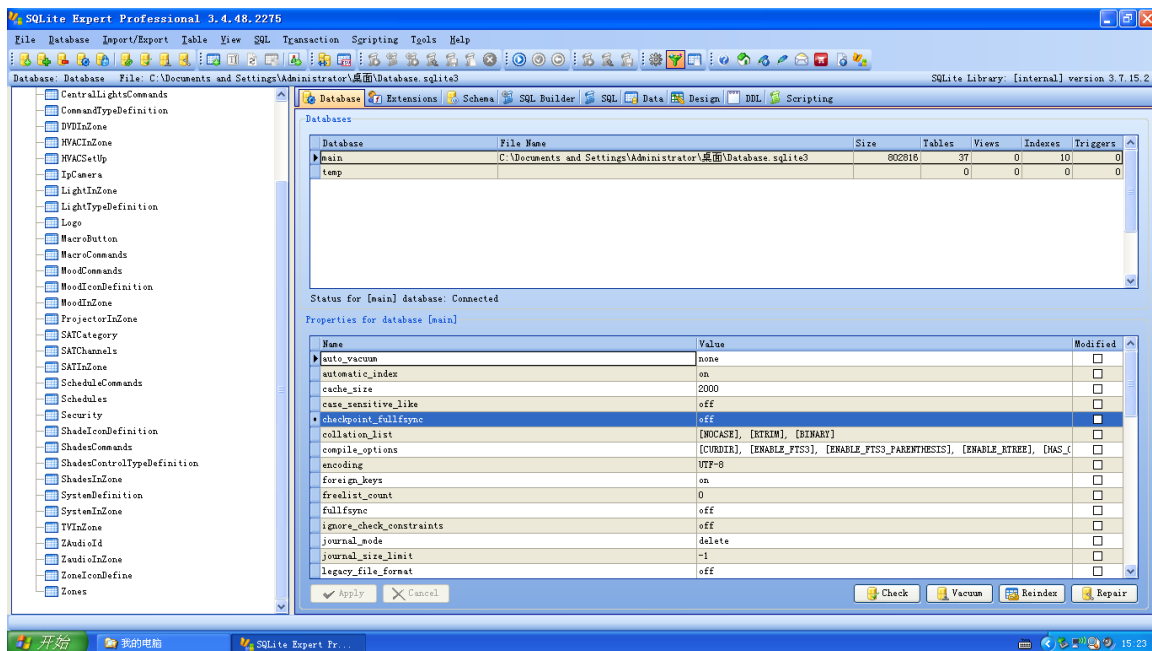


Select the **Files of Type** to be **Any File (*.*)**, then the database.sqlite3 is found



Open the file "Database.sqlite3"

The tables of this database is shown below:



From now on, you can start to configure the SMART-BUS IPHONE App.

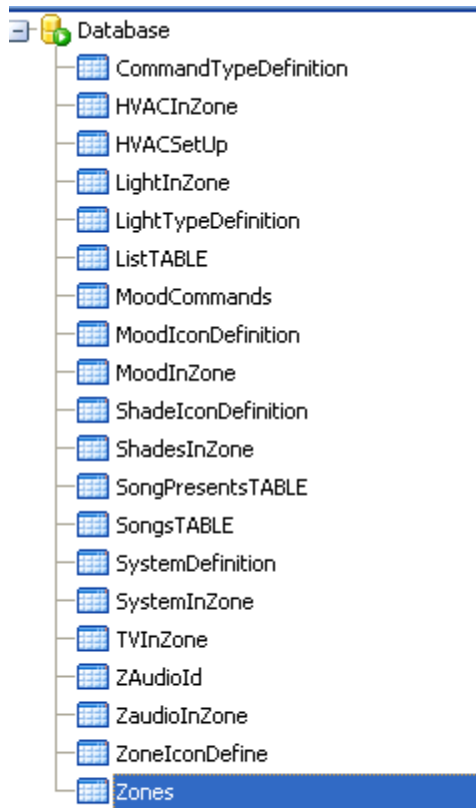
5. Zone Settings

Important Note:

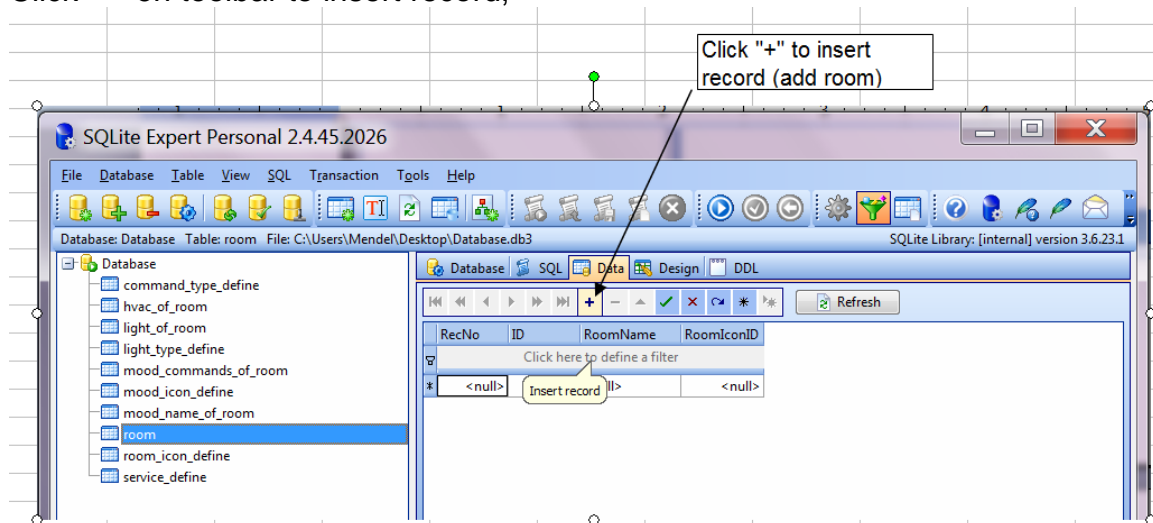
When you are configuring the database, please do not change the structure of database.
For example:

- Do not delete any table
- Do not change any table name
- Do not add/change/delete any fields of tables
- we just need to add/edit/delete data on the tables.**

Select the table “Zone”



Click “+” on toolbar to insert record,



Here the fields of table Zone:

Field Name	Remark	Value
ZoneID	This is the ID of Zone, every zone has unique ZoneID.	It's number, Start from 1

	I	
ZoneName	this is zone name, zone name can not be null, the max. Length of zone name is 15 letters. it will be shown on the zone list of main page	Letters
ZonelconID	This is the ID of Zone Icon; each ID stands for one icon. please see the definition below	from 0 to 15
SequenceNo	This is the display order	Start from 1

The definition of Zone Icon

Zonelcon No	Icon names	Icons
1	livingroom	
2	bedroom	
3	meetingroom	
4	kitchenroom	
5	gardenroom	

6	parkingroom	
7	Gymroom	
8	masterroom	
9	myselfroom	
10	diningroom	
11	toiletroom	
12	studyroom	

13	stairsroom	
14	demokit	
15	Showroom	
16	TEST	
17	formal	
18	entranceRoom	





19	Liveingroom2	
20	Liveingroom3	
21	Liveingroom4	
22	Bedroom2	
23	Bedroom3	
24	Bedroom4	

25	Barroom1	
26	Barroom2	
27	Barroom3	
28	MeetingRoom1	
29	MeetingRoom2	

30	Bedroom7	
31	Bedroom8	
32	Bedroom9	
33	Bedroom10	
34	Bedroom11	
35	Bedroom12	

36	Bedroom13	
37	Bedroom14	
38	Bedroom15	
39	LivingRoom5	
40	LivingRoom6	
41	LivingRoom7	

42	LivingRoom8	
43	KitchenRoom1	
44	KitchenRoom2	
45	KitchenRoom3	
46	KitchenRoom4	
47	KitchenRoom5	

48	Stairs1	
49	Stairs2	
50	Entrance	
51	BedRoom16	

Here are the examples:

5.1 Add Zone

ZoneID=10

ZoneName=Dining Room,

ZonelconID=10 (check the definition “**ZonelconID**” above)

SequenceNo=10

⏮

⏪

⏩

⏭

+

-

⬆

✓

✕

↺

*

⚙

🔄

Refresh

RecNo	ZoneID	ZoneName	ZoneIconID	SequenceNo
Click here to define a filter				
1	1	Living Room	1	2
2	2	Bed Room	2	3
3	3	Meeting	3	4
4	4	Dome Kit	14	1
5	5	KitchenRoom	4	5
6	6	ParkingRoom	5	6
7	7	Parking	6	7
8	8	Gymroom	7	8
9	9	MastRoom	8	9
10	10	Dining Room	10	10

If you want to add more zones, just do it the same as above.

5.2 Modify Zone

Select the row of table “Zone”, you can modify the zone

Database

CommandTypeDefinition

HVACInZone

HVACSetUp

LightInZone

LightTypeDefinition

ListTABLE

MoodCommands

MoodIconDefinition

MoodInZone

ShadeIconDefinition

ShadesInZone

SongPresentsTABLE

SongsTABLE

SystemDefinition

SystemInZone

TVInZone

ZAudioId

ZaudioInZone

ZoneIconDefine

Zones

Database

SQL

Data

Design

DDL

⏮

⏪

⏩

⏭

+

-

⬆

✓

✕

↺

✳






✳




Refresh


RecNo	ZoneID	ZoneName	ZoneIconID	SequenceNo	
Click here to define a filter					
1	1	Living Room	1	2	
2	2	Bed Room	2	3	
3	3	Meeting	3	4	
4	4	Dome Kit	14	1	
5	5	KitchenRoom	4	5	
6	6	ParkingRoom	5	6	
7	7	Parking	6	7	
8	8	Gymroom	7	8	
9	9	MastRoom	8	9	
10	10	Dining Room	10	10	

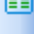
5.3 Delete zone

RecNo	ZoneID	ZoneName	ZoneIconID	SequenceNo
Click here to define a filter				
1	1	Living Room	1	2
2	2	Bed Room	2	3
3	3	Meeting	3	4
4	4	Dome Kit	14	1
5	5	KitchenRoom	4	5
6	6	ParkingRoom	5	6
7	7	Parking	6	7
8	8	Gymroom	7	8
9	9	MastRoom	8	9
10	10	Dining Room	10	10

 Record Editor
 Text Editor
 Image Editor
 Hex Editor
 Set to NULL

 Switch to Cell select mode
 Set cells to value...
 Set cells to NULL

 Delete selected record

 Select columns

6. Systems in Zone

Systems definition

RecNo	SystemID	SystemName
1	1	Light
2	2	HVAC
3	3	Z-Audio
4	4	Shades
5	5	TV
6	6	DVD
7	7	SAT
8	8	Apple TV
9	9	Projector
10	10	Moods

What systems does it have in each zone?

It can be configured according to the real situation of your project

Select table **SystemInZone**

RecNo	ZoneID	SystemID
1	1	1
2	1	2
3	1	3
4	1	4
5	2	6
6	2	1
7	2	2
8	2	3
9	2	5
10	3	1
11	3	2
12	3	3
13	3	6

ZoneID: from the table **Zones**, you can know the ZoneID from each Zone.

SystemID: from the table **SystemDefinition**, you can know the SystemID for each system.

Add the systems that you have to each zone

For example:

In the Living room, it has lights, HVAC, Z-Audio, Shade,

from the table **Zones**, we know the ZoneID is 1

from the table **SystemDefinition**, we know the **SystemID** as below:

Light=1

HVAC=2

Z-Audio=3

Shades=4

TV=5

DVD=6

SAT. =7

Apple TV=8

Projector=9

Moods=10

So the data will be added to the table **SystemInZone** as below:

⏮	⏪	⏩	⏭	⏮	+	-	⏴	⏵
RecNo	ZoneID	SystemID	Click here to define a filter					
•	1	1	1					
•	2	1	2					
•	3	1	3					
➤	4	1	4					

Smart-Bus IPHONE App will show the systems of zone according to the settings of table **SystemInZone**





7. Lights in Zone





the lights of each zone are stored on the table **LightInZone**

The Field of table “LightInZone”


Field	Remark	Value
ZoneID	The ZoneID can be known from the table Zones	Start from 1
LightID	ID of light	Start from 1
LightRemark	Light remark	
SubnetID	Address of Dimmer / Relay	0-254
DeviceID		0-254
ChannelNo	Channel no of light	0-254
CanDim	Light Type if the light can be dimmed, it equal 1 , if the light can not be dimmed, it equal 0,if it is LED Driver it equal 2	0 : Dimmable 1 : not Dimmable 2 : LED light
LightTypeID	Some different light icons are available, please the definition below	1-3
SequenceNo	It's the display order of lights	Start from 1

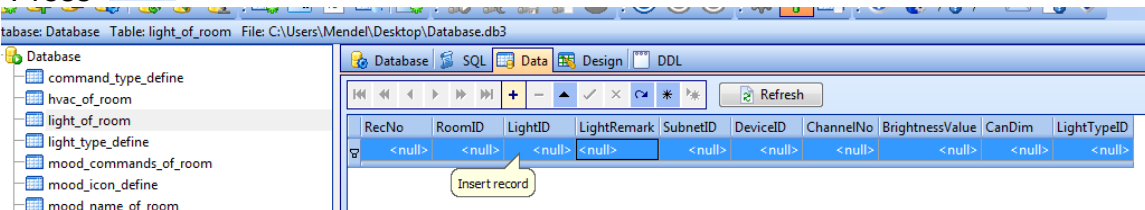
The definition of LightTypeID

LightTypeID	Light icon names	Icons
1	incandescent	
2	Spotlight	

3	Fluorescent	
4	Chandelier	
5	Desklight	
6	LED	

7.1 Add light 1 “surround” ,

Press 



Database: Database Table: light_of_room File: C:\Users\Mende\Desktop\Database.db3

RecNo	RoomID	LightID	LightRemark	SubnetID	DeviceID	ChannelNo	BrightnessValue	CanDim	LightTypeID
<null>	<null>	<null>	<null>	<null>	<null>	<null>	<null>	<null>	<null>

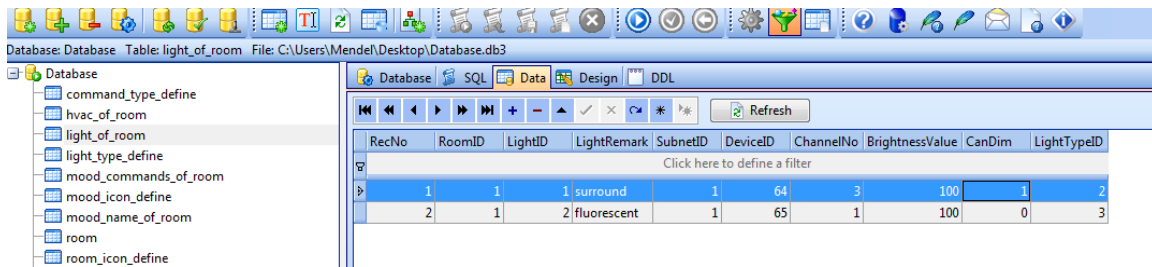
Input data of light



Database: Database Table: light_of_room File: C:\Users\Mende\Desktop\Database.db3

RecNo	RoomID	LightID	LightRemark	SubnetID	DeviceID	ChannelNo	BrightnessValue	CanDim	LightTypeID
1	1	1	surround	1	64	3	100	1	2

Add light 2 “fluorescent”



Limitless lights can be added to the zone.

7.2 Modify Light of zone

RecNo	RoomID	LightID	LightRemark	SubnetID	DeviceID	ChannelNo	BrightnessValue	CanDim	LightTypeID
Click here to define a filter									
1	1	1	surround	1	64	3	100	1	2

Delete the light of zone

Select the row that you want to delete, right click and select “Delete selected record”

RecNo	RoomID	LightID	LightRemark	SubnetID	DeviceID	ChannelNo	BrightnessValue	CanDim	LightTypeID
Click here to define a filter									
1	1	1	surround	1	64	3	100	1	2
2	1	2	fluorescent	1	65	1	100	0	3

Record Editor
Text Editor
Image Editor
Hex Editor
Set to NULL
Switch to Cell select mode
Set cells to value...
Set cells to NULL
Delete selected record

7.2 Set “CanDim” value as 2

rowid	ZoneID	LightID	LightRemark	SubnetID	DeviceID	ChannelNo	CanDim	LightTypeID	SequenceNo
37	4	8	LED	1	75	4	2	6	8
1	4	1	surround	1	3	1	1	1	1

To know what's CanDim look up “The Field of table “LightInZone” “ above.

8. AC in Zone

Select the table **HVACInZone**

▶ AppleTVInZone	rowid	ZoneID	SubnetID	DeviceID	ACNumber	ACTypeID	ACSyncNo
▶ Camera	1	1	1	20	0	1	80
▶ CentralHVAC	2	2	1	21	0	1	0
▶ CentralHVACCommands	3	3	1	6	0	1	0
▶ CentralLights	4	4	1	21	0	1	0
▶ CentralLightsCommands	5	5	1	20	0	1	0
▶ CommandTypeDefinition	6	6	1	20	0	1	0
▶ DVDInZone	7	7	1	20	0	1	0
▶ HVACInZone	8	8	1	20	0	1	0
▶ HVACInZoneIRCommands	9	9	1	20	0	1	0

Filed of table **HVACInZone**

Field	Remark	Value
ZoneID	ZoneID is defined in the table Zones	
SubnetID	Address of HVAC / DDP	1-254
DeviceID		1-254
ACNumber	To mark which AC in one zone	Scope: HVAC 1-9 By IR 1-5 1 = manager AC
ACTypeID	Flag for type of AC	0 = By HVAC 1 = By IR
ACSyncNo	If the AC Have the same number they will sync status. If one changed others will change to the same status.	Scope:1-254

Others settings

Select the table **HVACSetUp**

Field of table HVACSetup

Field	Remark	Value
IsCelsiur	Celsius=true Fahrenheit=false	True /False
TempertureOfCold	it's for most common	Number

	button of cold	
TempertureOfCool	it's for most common button of cool	Number
TempertureOfWarm	it's for most common button of warm	Number
TempertureOfHot	it's for most common button of Hot	Number



8.1 Add more AC in one zone

- A、 To add more AC in database see **8. AC in Zone**
- B、 Click the button at front of zone temperature to choose the AC



- C、 To turn on/off all AC by DDP using Macro Button Set Command as below
 CommandTypeID:10(Panel control+)
 FirstParameter: 18(Invoking DDP Button)
 SecondParameter:33 (DDP to control all AC on/off)
 ThirdParameter: 0=All AC off 1 = All AC On

9. Z-Audio Settings

Select the table **ZaudioInZone**

- TVInZone
- ZAudioId
- **ZaudioInZone**
- ZoneIconDefine

Add the address of z-audio to the table **ZaudioInZone**

RecNo	ZoneID	SubnetID	DeviceID
Click here to define a filter			
1	1	1	200
2	2	1	31

10. Media in Zone

Media includes TV, Apple TV, DVD, Projector, SAT., each device has separated page, and each page can be shown or hidden.

in table **SystemInZone**, Add the systems that you have to the zone.

RecNo	ZoneID	SystemID
1	1	1
2	1	2
3	1	3
4	1	4
5	2	6
6	2	1

System definition:

RecNo	SystemID	SystemName
1	1	Light
2	2	HVAC
3	3	Z-Audio
4	4	Shades
5	5	TV
6	6	DVD
7	7	SAT.
8	8	Apple TV
9	9	Projector

10.1 TV

10.1.1. System Settings if has TV in the Zone

Suppose to the zone ID=3

If you have TV in the zone, you need to add it to table **SystemInZone**

The SystemID of TV is: 5

<div>⏮ ⏪ ⏩ ⏭ ⏴ ⏵ ⏶ ⏷ ⏸ ⏹ ⏺ ⏻ ⏼ ⏽ ⏾ ⏿</div>			
RecNo	ZoneID	SystemID	
Click here to define a filter			
7	2	1	
8	2	2	
9	2	3	
10	2	5	
11	3	1	*
12	3	2	*
13	3	3	*
14	3	6	*
15	3	5	*
16	3	7	*
17	3	8	*
18	3	9	*
19	4	1	
20	4	2	

10.1.2. TV Settings in Zone

Select table **TVInZone**

Index	Name	Declared Type	Type
1	ZoneID	INT	INT
2	SubnetID	INT	INT
3	DeviceID	INT	INT
4	UniversalSwitchIDforOn	INT	INT
5	UniversalSwitchStatusforOn	INT	INT
6	UniversalSwitchIDforOff	INT	INT
7	UniversalSwitchStatusforOff	INT	INT
8	UniversalSwitchIDforCH+	INT	INT
9	UniversalSwitchIDforCH-	INT	INT
10	UniversalSwitchIDforVOL+	INT	INT
11	UniversalSwitchIDforVOL-	INT	INT
12	UniversalSwitchIDforMute	INT	INT
13	UniversalSwitchIDforMenu	INT	INT
14	UniversalSwitchIDforSource	INT	INT
15	UniversalSwitchIDforOK	INT	INT

Subnet ID, Device ID: Address of IR Emitter / 9in 1 sensor

Input the Universal ID for the following item:

UniversalSwitchIDforOn
UniversalSwitchStatusforOn
UniversalSwitchIDforOff
UniversalSwitchStatusforOff
UniversalSwitchIDforCH+
UniversalSwitchIDforCH-
UniversalSwitchIDforVOL+
UniversalSwitchIDforVOL-
UniversalSwitchIDforMute
UniversalSwitchIDforMenu
UniversalSwitchIDforSource
UniversalSwitchIDforOK

RecNo	ZoneID	SubnetID	DeviceID	UniversalSwitchIDforOn	UniversalSwitchStatusforOn	UniversalSwitchIDforOff	UniversalS
Click here to define a filter							
1	1	1	50	1	255	1	
2	2	1	2	1	255	1	
3	3	1	2	1	255	1	
4	4	1	2	1	255	1	
5	5	1	2	1	255	1	
6	6	1	2	1	255	1	
7	7	1	2	1	255	1	
8	8	1	2	1	255	1	
9	9	1	2	1	255	1	

10.2 Apple TV

10.2.1 System Settings if has Apple TV in the Zone

Suppose to the zone ID=3

if you have Apple TV in the zone, you need to add it to table **SystemInZone**

The SystemID of Apple TV is: 8

<div> <div> <div>⏮</div> <div>⏪</div> <div>⏩</div> <div>⏭</div> <div>⏴</div> <div>⏵</div> <div>⏶</div> <div>⏷</div> <div>⏸</div> <div>⏹</div> <div>⏺</div> <div>⏻</div> <div>⏼</div> <div>⏽</div> <div>⏾</div> <div>⏿</div> </div> <div> <div>+</div> <div>-</div> <div>⬆</div> <div>✓</div> <div>⌂</div> </div> </div>			
RecNo	ZoneID	SystemID	
Click here to define a filter			
7	2	1	
8	2	2	
9	2	3	
10	2	5	
• 11	3	1	
• 12	3	2	
• 13	3	3	
• 14	3	6	
• 15	3	5	
• 16	3	7	
• 17	3	8	
• 18	3	9	
19	4	1	
20	4	2	

10.2.2. Apple TV Settings in the Zone

Select table **AppleTVInZone**

Database	SQL	Data	Design	DDL
Table name: AppleTVInZone				
Fields	Indexes	Foreign Keys	Constraints	
Index	Name	Declared Type	T	
1	ZoneID	INT	IP	
2	SubnetID	INT	IP	
3	DeviceID	INT	IP	
4	UniversalSwitchIDforOn	INT	IP	
5	UniversalSwitchStatusforOn	INT	IP	
6	UniversalSwitchIDforOff	INT	IP	
7	UniversalSwitchStatusforOff	INT	IP	
8	UniversalSwitchIDforUp	INT	IP	
9	UniversalSwitchIDforDown	INT	IP	
10	UniversalSwitchIDforLeft	INT	IP	
11	UniversalSwitchIDforRight	INT	IP	
12	UniversalSwitchIDforOK	INT	IP	
13	UniversalSwitchIDforMenu	INT	IP	
14	UniversalSwitchIDforPlayPause	INT	IP	

Subnet ID, Device ID: Address of IR Emitter / 9in 1 sensor
Input the Universal ID for the following item:

4	UniversalSwitchIDforOn
5	UniversalSwitchStatusforOn
6	UniversalSwitchIDforOff
7	UniversalSwitchStatusforOff
8	UniversalSwitchIDforUp
9	UniversalSwitchIDforDown
10	UniversalSwitchIDforLeft
11	UniversalSwitchIDforRight
12	UniversalSwitchIDforOK
13	UniversalSwitchIDforMenu
14	UniversalSwitchIDforPlayPause

10.3 DVD

10.3.1. System Settings if has DVD in the Zone

Suppose to the zone ID=3

if you have DVD in the zone, you need to add it to table **SystemInZone**

The SystemID of DVD is: 6

<div>⏮ ⏪ ⏩ ⏭ ⏮ ⏪ ⏩ ⏭ + - ▲ ✓</div>			
	RecNo	ZoneID ▲	SystemID
⚙	Click here to define a filter		
	7	2	1
	8	2	2
	9	2	3
	10	2	5
•	11	3	1
•	12	3	2
•	13	3	3
•	14	3	6
•	15	3	5
•	16	3	7
•	17	3	8
•	18	3	9
	19	4	1
	20	4	2

10.3.2. DVD Settings in the Zone

Select table **DVDInZone**

Index	Name	Decl
1	ZoneID	INT
2	SubnetID	INT
3	DeviceID	INT
4	UniversalSwitchIDforOn	INT
5	UniversalSwitchStatusforOn	INT
6	UniversalSwitchIDforOff	INT
7	UniversalSwitchStatusforOff	INT
8	UniversalSwitchIDfoMenu	INT
9	UniversalSwitchIDfoUp	INT
10	UniversalSwitchIDforDown	INT
11	UniversalSwitchIDforFastForward	INT
12	UniversalSwitchIDforBackForward	INT
13	UniversalSwitchIDforOK	INT
14	UniversalSwitchIDforPREVChapter	INT
15	UniversalSwitchIDforNextChapter	INT
16	UniversalSwitchIDforPlayPause	INT

Subnet ID, Device ID: Address of IR Emitter / 9in 1 sensor
Input the Universal ID for the following item:

RecNo	ZoneID	SubnetID	DeviceID	UniversalSwitchIDforOn	UniversalSwitchStatusforOn	UniversalSwitchIDforOff	UniversalSwitchSta
Click here to define a filter							
1	1	1	2	1	255	1	
2	2	1	2	1	0	1	
3	3	1	2	1	0	1	
4	4	1	2	1	255	1	
5	5	1	2	1	0	1	
6	6	1	2	1	0	1	
7	7	1	2	1	0	1	
8	8	1	2	1	0	1	
9	9	1	2	19	9	19	

10.4 Projector

10.4.1. System Settings if has Projector in the Zone

Suppose to the zone ID=3

if you have projector in the zone, you need to add it to table **SystemInZone**

The SystemID of projector is: 9

<div><div><div>⏮</div><div>⏪</div><div>⏩</div><div>⏭</div><div>⏯</div><div>+</div><div>-</div><div>▲</div><div>✓</div></div></div>			
	RecNo	ZoneID	SystemID
🔍	Click here to define a filter		
	7	2	1
	8	2	2
	9	2	3
	10	2	5
•	11	3	1
•	12	3	2
•	13	3	3
•	14	3	6
•	15	3	5
•	16	3	7
•	17	3	8
•	18	3	9
	19	4	1
	20	4	2

10.4.2. Projector Settings in the Zone

Select table **ProjectorInZone**

Table name:

Fields Indexes Foreign Keys

Index	Name	
1	ZoneID	II
2	SubnetID	II
3	DeviceID	II
4	UniversalSwitchIDforOn	II
5	UniversalSwitchStatusforOn	II
6	UniversalSwitchIDforOff	II
7	UniversalSwitchStatusforOff	II
8	UniversalSwitchIDfoUp	II
9	UniversalSwitchIDforDown	II
10	UniversalSwitchIDforLeft	II
11	UniversalSwitchIDforRight	II
12	UniversalSwitchIDforOK	II
13	UniversalSwitchIDfoMenu	II
14	UniversalSwitchIDforSource	II

Subnet ID, Device ID: Address of IR Emitter / 9in 1 sensor
 Input the Universal ID for the following item:

Database: Database Table: ProjectorInZone File: E:\Iphone\Manual\Database.sqlite3 SQLite Library: [Internal]

Database SQL Data Design DDL

Database

- AppleTVInZone
- CommandTypeDefinition
- DVDInZone
- HVACInZone
- HVACSetUp
- LightInZone
- LightTypeDefinition
- MoodCommands
- MoodIconDefinition
- MoodInZone
- ProjectorInZone
- SATInZone
- ShadeIconDefinition
- ShadesCommands

Database SQL Data Design DDL

Refresh

RecNo	ZoneID	SubnetID	DeviceID	UniversalSwitchIDforOn	UniversalSwitchStatusforOn	UniversalSwitchIDforOff	UniversalSwitchStatusforOff
1	1	1	11	21	255	21	
2	2	1	2	0	0	0	
3	3	1	2	0	0	0	
4	4	1	2	0	255	0	
5	5	1	2	0	0	0	
6	6	1	2	0	0	0	
7	9	1	2	22	23	24	


10.5 SAT. /Cable

10.5.1. System Settings if has SAT. In the Zone

Suppose to the zone ID=3

if you have SAT./Cable in the zone, you need to add it to table **SystemInZone**

The SystemID of SAT./Cable is: 7

			
	RecNo	ZoneID	SystemID
Click here to define a filter			
	7	2	1
	8	2	2
	9	2	3
	10	2	5
•	11	3	1
•	12	3	2
•	13	3	3
•	14	3	6
•	15	3	5
•	16	3	7
•	17	3	8
•	18	3	9
	19	4	1
	20	4	2

10.5.2. System Settings if has SAT. In the Zone

Select table **SATInZone**

Table name:

Fields Indexes Foreign Keys

Index	Name
1	ZoneID
2	SubnetID
3	DeviceID
4	UniversalSwitchIDforOn
5	UniversalSwitchStatusforOn
6	UniversalSwitchIDforOff
7	UniversalSwitchStatusforOff
8	UniversalSwitchIDfoUp
9	UniversalSwitchIDforDown
10	UniversalSwitchIDforLeft
11	UniversalSwitchIDforRight
12	UniversalSwitchIDforOK
13	UniversalSwitchIDfoMenu
14	UniversalSwitchIDforFAV

Subnet ID, Device ID: Address of IR Emitter / 9in 1 sensor
 Input the Universal ID for the following item:

Database SQL Data Design DDL

Refresh

RecNo	ZoneID	SubnetID	DeviceID	UniversalSwitchIDforOn	UniversalSwitchStatusforOn	UniversalSwitchIDforOff	Univer
Click here to define a filter							
1	1	1	50	25	255	25	
2	2	1	2	0	255	0	
3	3	1	2	0	0	0	
4	4	1	2	0	255	0	
5	5	1	2	0	0	0	
6	6	1	2	0	0	0	
7	9	1	2	22	255	24	

11. Shades in Zone

11.1 System settings if has shade in zone

Suppose to the zone ID=3

if you have shade in the zone, you need to add it to table **SystemInZone**

The SystemID of Shade is: 4

ShadesControlTypeDefinition		11	4	1
ShadesInZone		12	4	2
SystemDefinition		13	4	3
SystemInZone		14	4	6
TVInZone	*	15	3	1
ZAudioId	*	16	3	2
ZaudioInZone	*	17	3	3
ZoneIconDefine	*	18	3	6
Zones	*	19	3	5
	*	20	3	7
	*	21	3	8
	*	22	3	9
	➤	23	3	4
		24	2	6

11.2 Add shades to the Zone

select table ShadesInZone

Table name:

Fields Indexes Foreign Keys Constraints

Index	Name	Declared Type
1	ZoneID	INT
2	ShadeID	INT
3	ShadeName	NVARCHAR
4	ShadeIconID	INT
5	SequenceNo	INTEGER
6	HasStop	INT

Table: ShadesInZone	
FileName	DESC
ZoneID	ZoneID can get from the table Zones
ShadeID	ShadeID start from 1
ShadeName	The Name of shade
ShadeIconID	Always 1
SequenceNo	The order of show
HasStop	If has the function of shade stop, please put 1, otherwise put 0

Suppose to the zone ID=3

	3	4	12 Right	1	12	1
MoodCommands	4	2	4 Left	1	4	1
MoodIconDefinition	5	2	5 Middle	1	5	1
MoodInZone	6	2	6 Right	1	6	1
ProjectorInZone	7	3	1 Left	1	1	1
SATInZone	8	3	2 Middle	1	2	1
ShadeIconDefinition	9	3	3 Right	1	3	1
ShadesCommands	10	1	1 Left	1	1	1
ShadesControlTypeDefinition	11	1	2 Right	1	2	1
ShadesInZone	12	1	3 Middle	1	3	0

11.3 Commands for the shade

Select table **ShadesCommands**

Table name: ShadesCommands		
Fields	Indexes	Foreign Keys
Constraints		
Index	Name	Declared Type
1	ZoneID	INT
2	ShadeID	INT
3	ShadeControlType	INT
4	CommandID	INT
5	SequenceNo	INT
6	Remark	NVARCHAR(50)
7	SubnetID	INT
8	DeviceID	INT
9	CommandTypeID	INT
10	FirstParameter	INT
11	SecondParameter	INT
12	ThirdParameter	INT
13	DelayMillisecondAfterSend	INT

Table: ShadesCommands	
FileName	DESC
ZoneID	ZoneID can get from the table Zones
ShadeID	ShadeID start from 1,check the table ShadesInZone
ShadeControlType	Open shade: 1 Close Shade: 0 Stop shade:2
CommandID	check the table ShadesInZone
SequenceNo	The order of the command executing.
Remark	
SubnetID	Address of Relay module / IR Emitter / 9in1
DeviceID	
CommandTypeID	See the commandTypeID definition below if you use relay module to control shade, you need to choose Single channel control ; If you control shade by IR, you need to choose Universal Switch Control .
FirstParameter	Please see the table below
SecondParameter	Please see the table below

ThirdParameter	Please see the table below
DelayMillisecondAfterSend	Delay after this command has been sent Unit=millisecond

ConmandTypeID Definition

Command TypeID	Command Type Name	Remark	FirstParameter	SecondParameter	ThirdParameter
0	Scene control		Zone No (1-254)	Scene No (0-254)	Unused (set 0)
1	Sequence Control		Zone No (1-254)	Sequence No (0-254)	Unused (set 0)
2	Universal Switch Control		Universal Switch ID (0-255)	Switch Control status (255:on 0: off)	Unused (set 0)
3	Invalid	Invalid command, it will not take any actions	Any value (0-255)	Any value (0-255)	Any value (0-65535)
4	Single Channel Control		Channel No (1-255)	Brightness percentage (0 -100)	Running Time, unit: second (0 -3600)
5	Broadcast scene	Run the specific scene in all area of current module	Broadcast area (Must be set 255)	Scene No (0-254)	Unused (set 0)
6	Broadcast All channels	Control all the channels of current module	Broadcast all channels (Must be set 255)	Brightness percentage (0 -100)	Running Time, unit: second (0 -3600)
7	Curtain Control	Control curtain if you are using g3 curtain module	Curtain No (1-4)	Curtain Control Status (0: Stop 1: Open 2: Close)	Unused (set 0)
8	Timer Control		Channel No (1-255)	Control Status (255: open 0 : close)	Unused (set 0)
9	SMS Control	Control G3 SMS module	Type ID (0: invalid 1: SMS	SMS Command No	Unused (set 0)

			Message)	(0-255)	
10	Panel control		Panel control for A/C		
			FirstParameter (TypeID)	SecondParameter (Value)	ThirdParameter
			0=(invalid)	0	0
			1=(enable/disable IR receive function of DLP)	0: (disable) 1: (enable)	0
			3=(Power on/off A/C)	0: (power off) 1: (power on)	0
			4=(cool Set point)	0-30 c 32-86F	0
			5=(FAN Speed)	0: (auto) 1: (High) 2: (Medium) 3: (low)	0
			6=(AC mode)	0: (Cool) 1: (Heat) 2: (FAN) 3: (Auto)	0
			7=(Heat set point)	0-30 c 32-86F	
			8=(Auto Set point)	0-30 c 32-86F	
			Invoking DDP Button	18	1 byte DDP button number Scope 1-32 1 = left of the first button of Pag1 from top to bottom 2 = right of the first button of Pag1 from top to bottom 3 = left of the second button from top to bottom of Pag1 4 = 2R P1 , 5 = 3L P1, 6 = 3R P1, 7 = 4L P1, 8 = 4R P1; 9 = 1L P2, 10 = 1R P2, 11 = 2L P2, 12 = 2R P2, 13 = 3L P2, 14 = 3R P2 32 = right of the fourth button of Pag4
			Turn on/off all AC controlled by one DDP	18	33 Has one more byte,(0=All off;1=All on)
			Go to Page	0x16	Page No 1-7

11	Security Mode control		Zone no (1-8)	Mode No 1: vacation 2: away 3: night 4: Night with guest 5: Day 6: Disarm	Unused (set 0)												
12	Security Alarm		Zone no (1-8)	Alarm No 1: vacation 2: Away 4: Night 8: Night with guest 16: Day 32: Siren 64: Power 128: Temperature 256: Fire 512: Gas 1024: Panic 2048: Emergency 4096: Current	Unused (set 0)												
18	Z-Audio		<table><tr><td colspan="3">Z-Audio</td></tr><tr><td>FirstParameter (Type ID)</td><td>SecondParameter (Value)</td><td>ThirdParameter</td></tr><tr><td>1=Music Source</td><td>Music Source No SD card =1 Audio In =2 FTP Server =3 FM Radio =4</td><td>N/A</td></tr><tr><td>3=Song List / Radio List Control</td><td>Type of list Control PREV. Song List =1 Next Song List=2 Specify Song List No=3 PREV Radio Channel=4 Next Radio Channel =5 Specify Radio No=6</td><td>Song List No / Radio No (only available when Second Parameter is equal 3 or 6)</td></tr></table>			Z-Audio			FirstParameter (Type ID)	SecondParameter (Value)	ThirdParameter	1=Music Source	Music Source No SD card =1 Audio In =2 FTP Server =3 FM Radio =4	N/A	3=Song List / Radio List Control	Type of list Control PREV. Song List =1 Next Song List=2 Specify Song List No=3 PREV Radio Channel=4 Next Radio Channel =5 Specify Radio No=6	Song List No / Radio No (only available when Second Parameter is equal 3 or 6)
Z-Audio																	
FirstParameter (Type ID)	SecondParameter (Value)	ThirdParameter															
1=Music Source	Music Source No SD card =1 Audio In =2 FTP Server =3 FM Radio =4	N/A															
3=Song List / Radio List Control	Type of list Control PREV. Song List =1 Next Song List=2 Specify Song List No=3 PREV Radio Channel=4 Next Radio Channel =5 Specify Radio No=6	Song List No / Radio No (only available when Second Parameter is equal 3 or 6)															

			4=Play Control	Previous Song=1 Next Song=2 Play=3 Stop=4	N/A
			5=Volume Control	Percentage of VOL (0~ 100, 100% is max. VOL, 0 is mute)	N/A
			6=Specify Song Control	Song List No (1byte,0-255, Song List No 0 is for alarm voice)	Song No (1 – 999)

Example Settings if control shade by relay module

Command Type: Single Channel control (ID=4)

ShadeControlType: Open shade(ID=1)

RecNo	ZoneID	ShadeID	ShadeControlT...	Comman...	Seque...	Remark	SubnetID	DeviceID	CommandTypeID	FirstParameter	SecondParameter	ThirdPar...	Delay...
Click here to define a filter													
1	1	1	1	1	1	open shade	1	65	4	1	100	0	2000
2	1	1	1	2	2	open	1	64	2	1	0	0	2000
3	1	1	1	1	3	open	1	64	2	1	6	0	2000
4	1	1	0	1	1	close	1	64	2	1	7	0	2000
5	1	1	0	1	3	close	1	64	4	1	8	0	2000
6	1	1	2	2	3	stop	1	65	4	1	0	0	2000
7	1	1	0	2	2	close	1	65	4	1	0	0	0
8	3	1	1	1	1	Open shade	1	3	4	1	100	0	0
9	3	1	0	1	1	close shade	1	3	4	2	100	0	0

Example Settings if control shade by relay module

Command Type: Single Channel control (ID=4)

ShadeControlType: Close shade (ID=0)

RecNo	ZoneID	ShadeID	ShadeControlT...	Comman...	Seque...	Remark	SubnetID	DeviceID	CommandTypeID	FirstParameter	SecondParameter	ThirdPar...	Delay...
Click here to define a filter													
1	1	1	1	1	1	open shade	1	65	4	1	100	0	2000
2	1	1	1	2	2	open	1	64	2	1	0	0	2000
3	1	1	1	1	3	open	1	64	2	1	6	0	2000
4	1	1	0	1	1	close	1	64	2	1	7	0	2000
5	1	1	0	1	3	close	1	64	4	1	8	0	2000
6	1	1	2	2	3	stop	1	65	4	1	0	0	2000
7	1	1	0	2	2	close	1	65	4	1	0	0	0
8	3	1	1	1	1	Open shade	1	3	4	1	100	0	0
9	3	1	0	1	1	close shade	1	3	4	2	100	0	0

Example Settings if control shade by relay module

Command Type: Single Channel control (ID=4)

ShadeControlType: Stop shade (ID=2)

RecNo	ZoneID	ShadeID	ShadeControlT...	Comman...	Seque...	Remark	SubnetID	DeviceID	CommandTypeID	FirstParameter	SecondParameter	ThirdPar...	Delay...
Click here to define a filter													
1	1	1	1	1	1	open shade	1	65	4	1	100	0	2000
2	1	1	1	2	2	open	1	64	2	1	0	0	2000
3	1	1	1	1	3	open	1	64	2	1	6	0	2000
4	1	1	0	1	1	close	1	64	2	1	7	0	2000
5	1	1	0	1	3	close	1	64	4	1	8	0	2000
6	1	1	2	2	3	stop	1	65	4	1	0	0	2000
7	1	1	0	2	2	close	1	65	4	1	0	0	0
8	3	1	1	1	1	Open shade	1	3	4	1	100	0	0
9	3	1	0	1	1	close shade	1	3	4	2	100	0	0
10	3	1	2	1	1	Stop shade	1	3	4	1	0	0	0
11	3	1	2	2	2	Stop shade	1	3	4	2	0	0	0

Example Settings if control shade by IR

Command Type: Universal Switch (ID=2)

ShadeControlType: Open shade(ID=1)

RecNo	ZoneID	ShadeID	ShadeControlT...	Comman...	Seque...	Remark	SubnetID	DeviceID	CommandTypeID	FirstParameter	SecondParameter	ThirdPar...	Delay...
Click here to define a filter													
1	1	1	1	1	1	open shade	1	65	4	1	100	0	2000
2	1	1	1	2	2	open	1	64	2	1	0	0	2000
3	1	1	1	1	3	open	1	64	2	1	6	0	2000
4	1	1	0	1	1	close	1	64	2	1	7	0	2000
5	1	1	0	1	3	close	1	64	4	1	8	0	2000
6	1	1	2	2	3	stop	1	65	4	1	0	0	2000
7	1	1	0	2	2	close	1	65	4	1	0	0	0
8	3	1	1	1	1	Open shade	1	3	4	1	100	0	0
9	3	1	0	1	1	close shade	1	3	4	2	100	0	0
10	3	1	2	1	1	Stop shade	1	3	4	1	0	0	0
11	3	1	2	2	2	Stop shade	1	3	4	2	0	0	0
12	3	2	1	1	1	Open shade	1	3	2	1	255	0	0
13	3	2	0	1	1	close shade	1	3	2	2	255	0	0

Example Settings if control shade by IR

Command Type: Universal Switch (ID=2)

ShadeControlType: Close shade(ID=0)

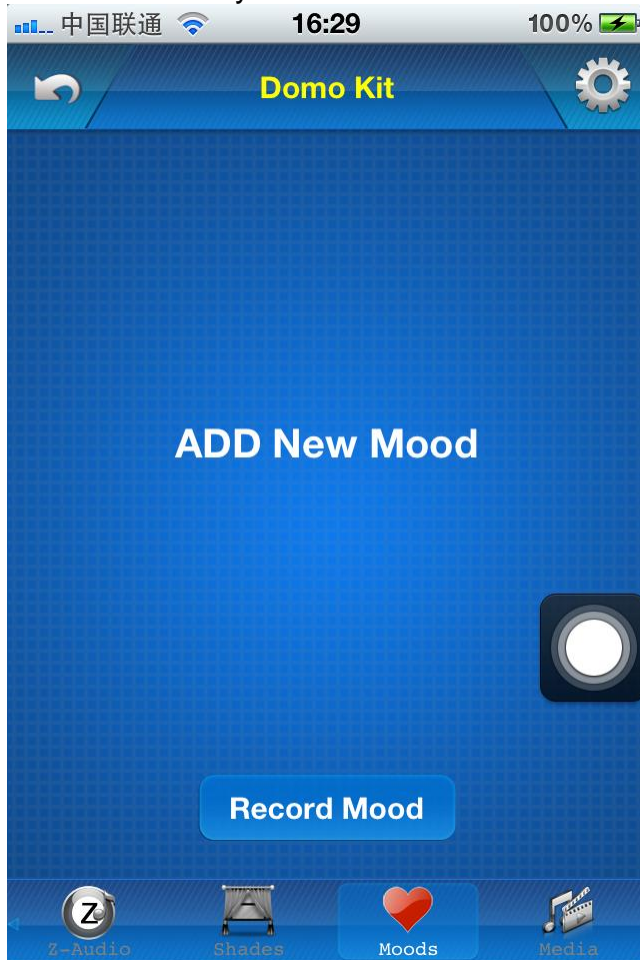
RecNo	ZoneID	ShadeID	ShadeControlT...	Comman...	Seque...	Remark	SubnetID	DeviceID	CommandTypeID	FirstParameter	SecondParameter	ThirdPar...	Delay...
Click here to define a filter													
1	1	1	1	1	1	open shade	1	65	4	1	100	0	2000
2	1	1	1	2	2	open	1	64	2	1	0	0	2000
3	1	1	1	1	3	open	1	64	2	1	6	0	2000
4	1	1	0	1	1	close	1	64	2	1	7	0	2000
5	1	1	0	1	3	close	1	64	4	1	8	0	2000
6	1	1	2	2	3	stop	1	65	4	1	0	0	2000
7	1	1	0	2	2	close	1	65	4	1	0	0	0
8	3	1	1	1	1	Open shade	1	3	4	1	100	0	0
9	3	1	0	1	1	close shade	1	3	4	2	100	0	0
10	3	1	2	1	1	Stop shade	1	3	4	1	0	0	0
11	3	1	2	2	2	Stop shade	1	3	4	2	0	0	0
12	3	2	1	1	1	Open shade	1	3	2	1	255	0	0
13	3	2	0	1	1	close shade	1	3	2	2	255	0	0

12. Mood Recording in Zone

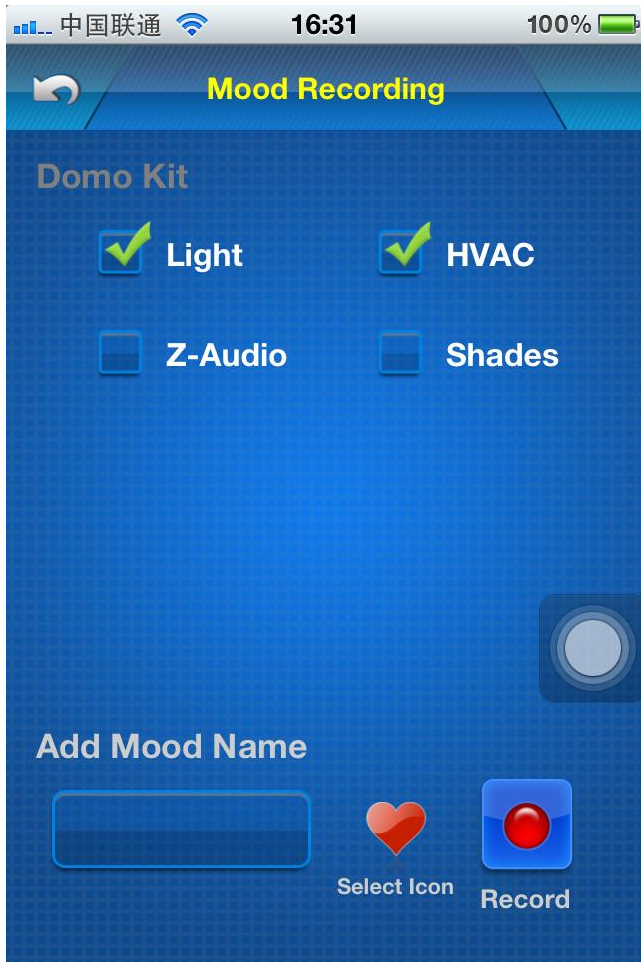
12.1 Record New Mood

Mood recording is designed for end user, No need to use any programming tool, the end user can make their own mood easily by themselves.

Go to zone that you would like to record.

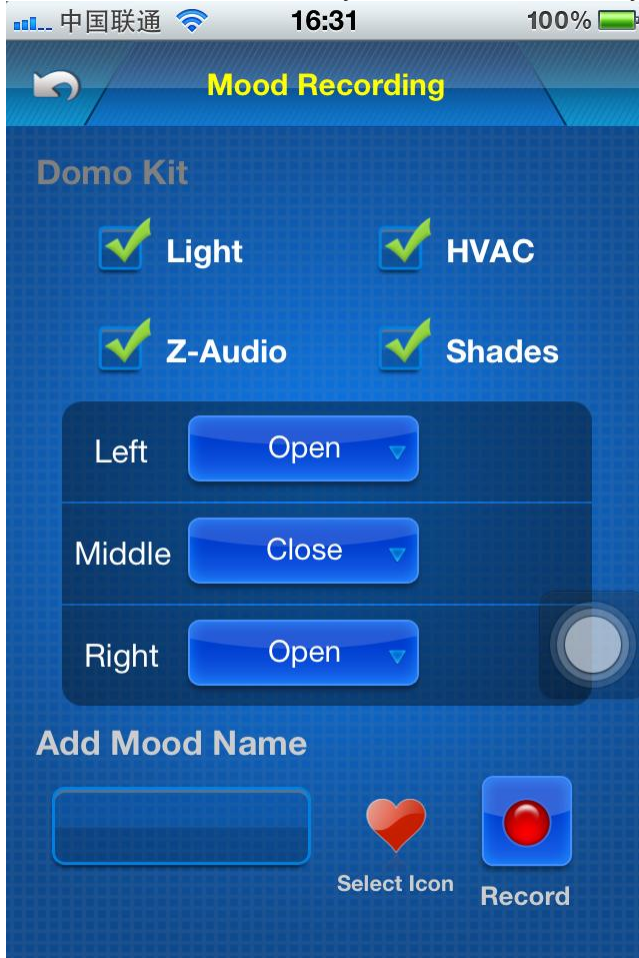


Click button "Record Mood" above

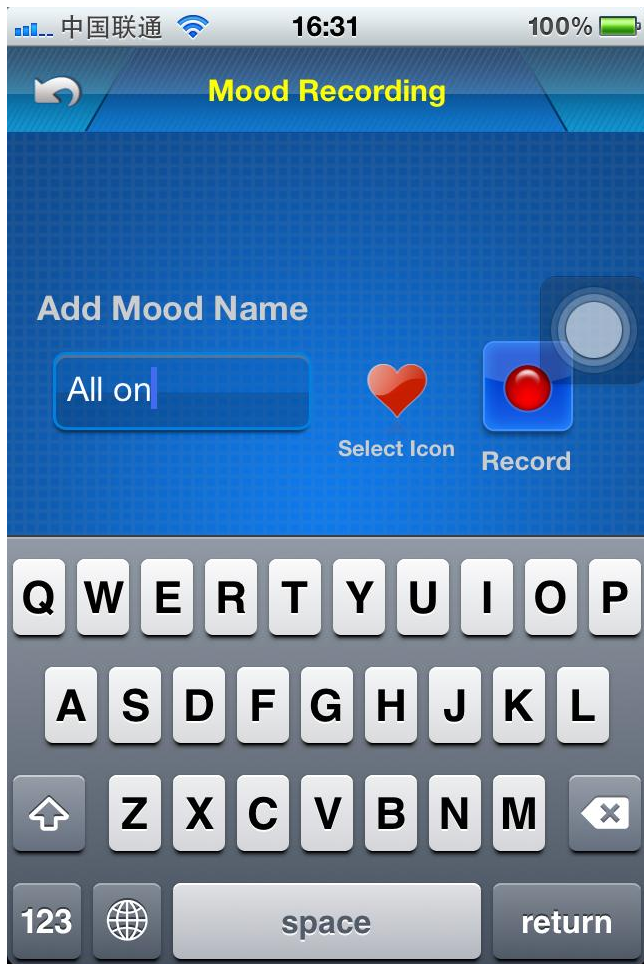


Select the devices that you would like to record such as light, HVAC, Z-Audio, Shades

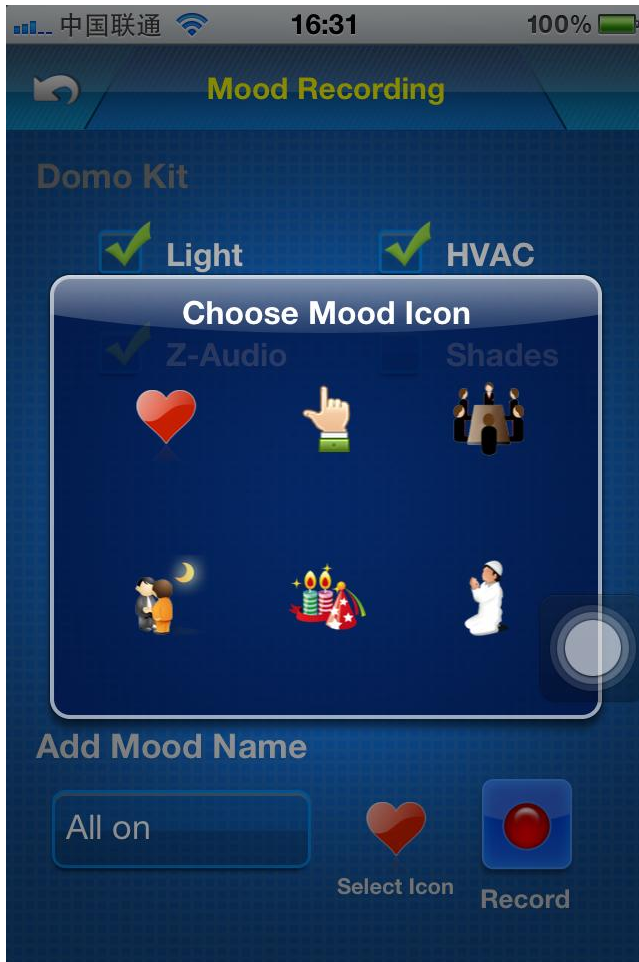
For the shades control, you need to select bypass/open/close



Type the mood name



Choose icon for the mood



Press button "Record"



Mood Recording

Domo Kit



Light



HVAC



Z-Audio



Shades



Recording Mood, Please Wait. . .

Cancel

Add Mood Name

All on



Select Icon



Record



Mood Recording

Domo Kit



Light



HVAC



Z-Audio



Shades

Record succeed!

OK



Add Mood Name

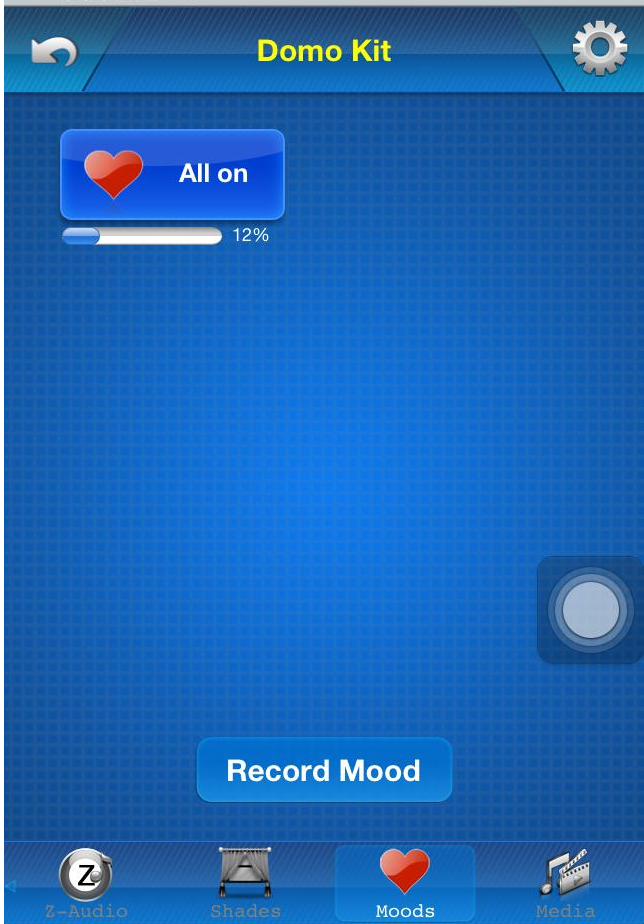
All on



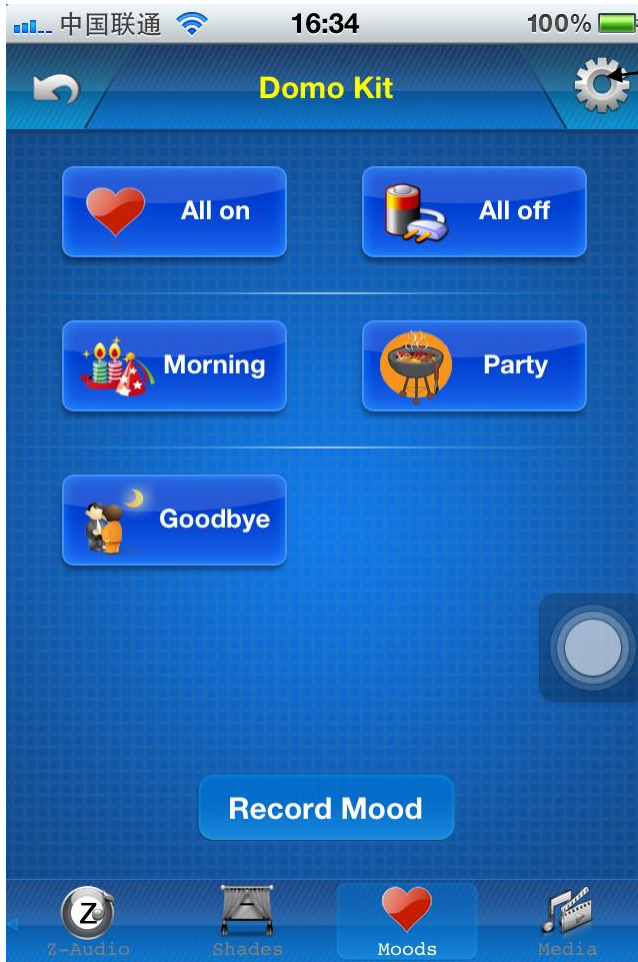
Select Icon



Record



12.2 Edit Existed Mood



Press this icon to go to edit page



Edit Mood

Domo Kit



All on



All off



Morning



Party

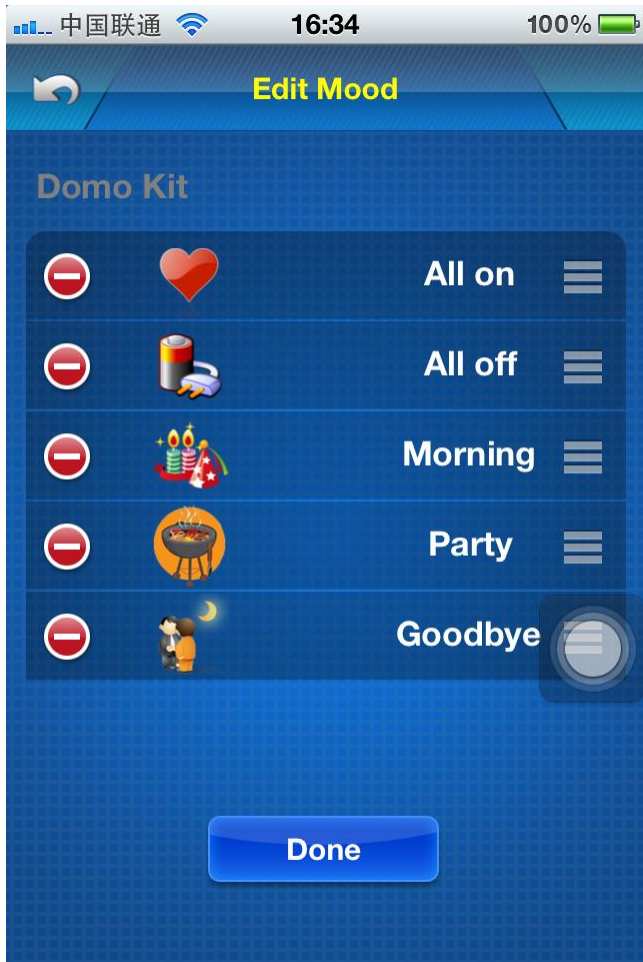


Goodbye

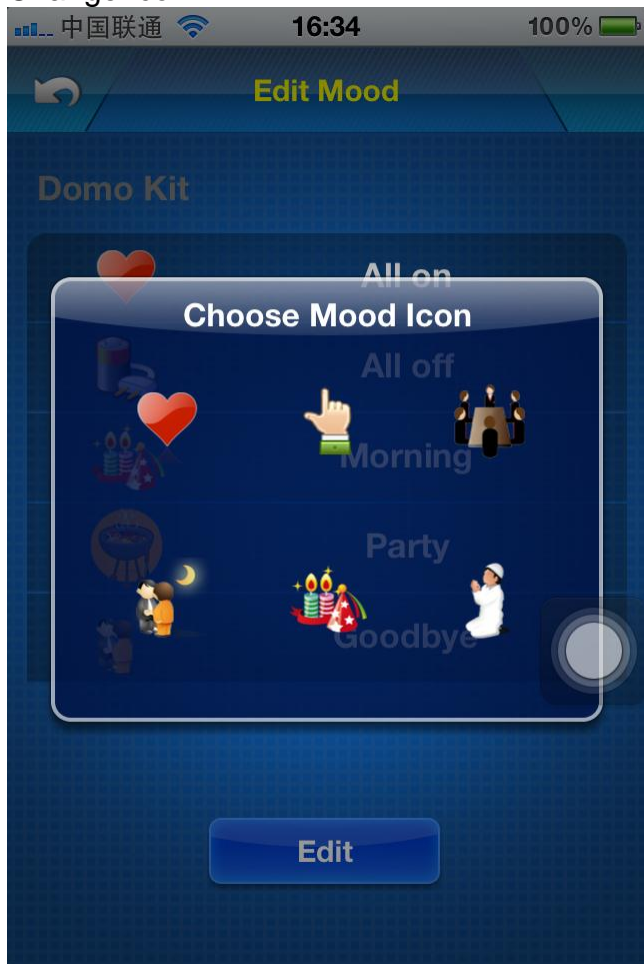


Edit

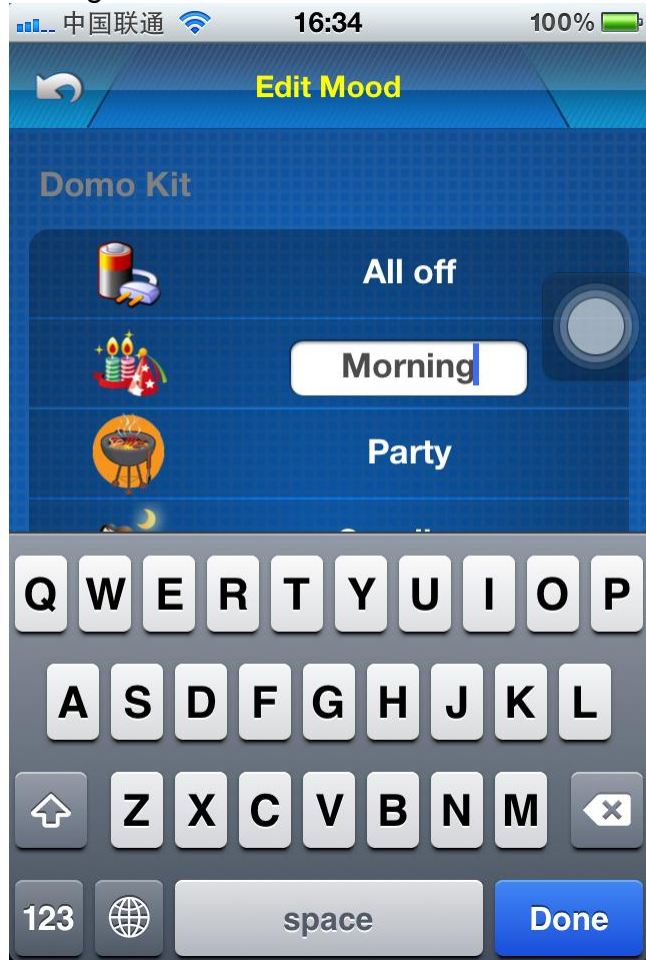
Press button "Edit" above



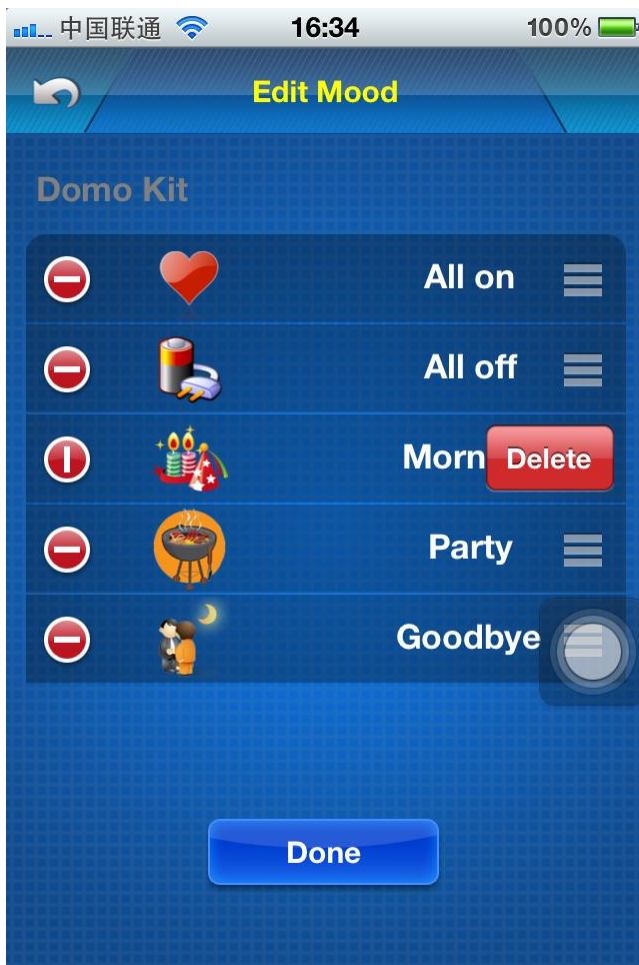
Change Icon



Change mood name



12.3 Delete existed mood

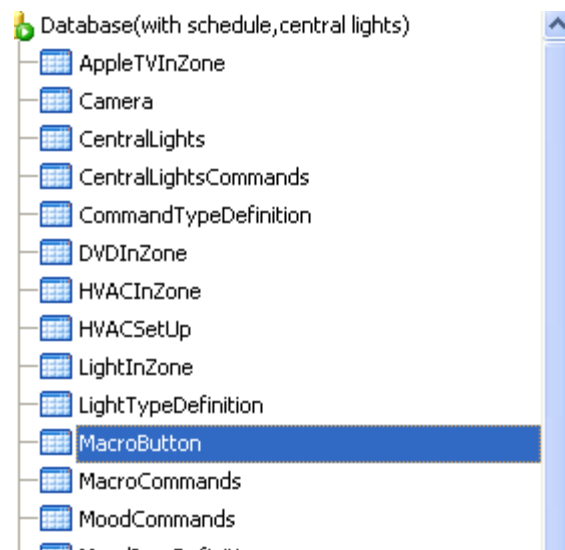


Press button “Done” to save the modification.

13. Macro Buttons

13.1 Add Macro button

select table : MacroButton





Refresh

RecNo	MacroID	MacroName	MacroIconID	SequenceNO
Click here to define a filter				
1	1	Meeting	1	1
2	2	Romantic	2	2
3	3	Party	3	3
4	4	TV Time	4	4
5	5	Bed Time	5	5
6	6	All On	6	6
7	7	All Off	7	7
8	8	Visitor Mode	8	8
9	9	Night	9	9
10	10	BBQ Play	10	10
11	11	Swimming	11	11
12	12	Prayer	12	12
13	13	Dinning	13	13

MacroIconID definition

MacroIconID	Icon Name	Icon
1	Meeting	
2	Romantic	






3	Party	
4	TV Time	
5	Bed Time	
6	Manual Time	
7	Energy Saving	
8	Visitor Mode	
9	Night Visitor	
10	BBQ	

11	Swimming Time	
12	Prayer Time	
13	Dimming Time	

Macro buttons will be displayed according to the **SequenceNo**

13.2 Add commands for macro button

Select table "MacroCommands"

-  LightTypeDefinition
-  MacroButton
-  **MacroCommands**
-  MoodCommands
-  MoodIconDefinition

RecNo	MacroID	SequenceNo	Remark	SubnetID	DeviceID	CommandTypeID	FirstParameter	SecondParameter
Click here to define a filter								
1	1	1	All on in manager room 1	1	3	4	1	
2	1	2	meeting in meeting room 1	1	3	4	2	
3	1	3	All on in manager room 2	1	3	4	3	
4	1	4	all on 1	1	3	4	1	
5	1	5	all on 2	1	9	4	1	
6	1	6	meeting in meeting room 2	1	20	10	3	
7	1	10	meeting in meeting room 2	1	200	18	5	
8	1	8	meeting in meeting room 2	1	200	18	6	
9	1	9	meeting in meeting room 2	1	200	18	4	
10	1	7	meeting in meeting room 2	1	200	18	1	
11	1	11	all on 2	1	9	4	2	
12	1	12	all on 2	1	9	4	3	
13	1	13	all on 2	1	9	4	3	
14	1	14	all on 2	1	9	4	3	
15	1	15	all on 2	1	9	4	3	

Add commands for the macro.

For the definition of [ConmandTypeID Definition](#), please see above.

To turn on/off all AC by DDP using Macro Button Set Command as below

CommandTypeID:10(Panel control+)

FirstParameter: 18(Invoking DDP Button)

SecondParameter:33 (DDP to control all AC on/off)

ThirdParameter: 0=All AC off 1 = All AC On

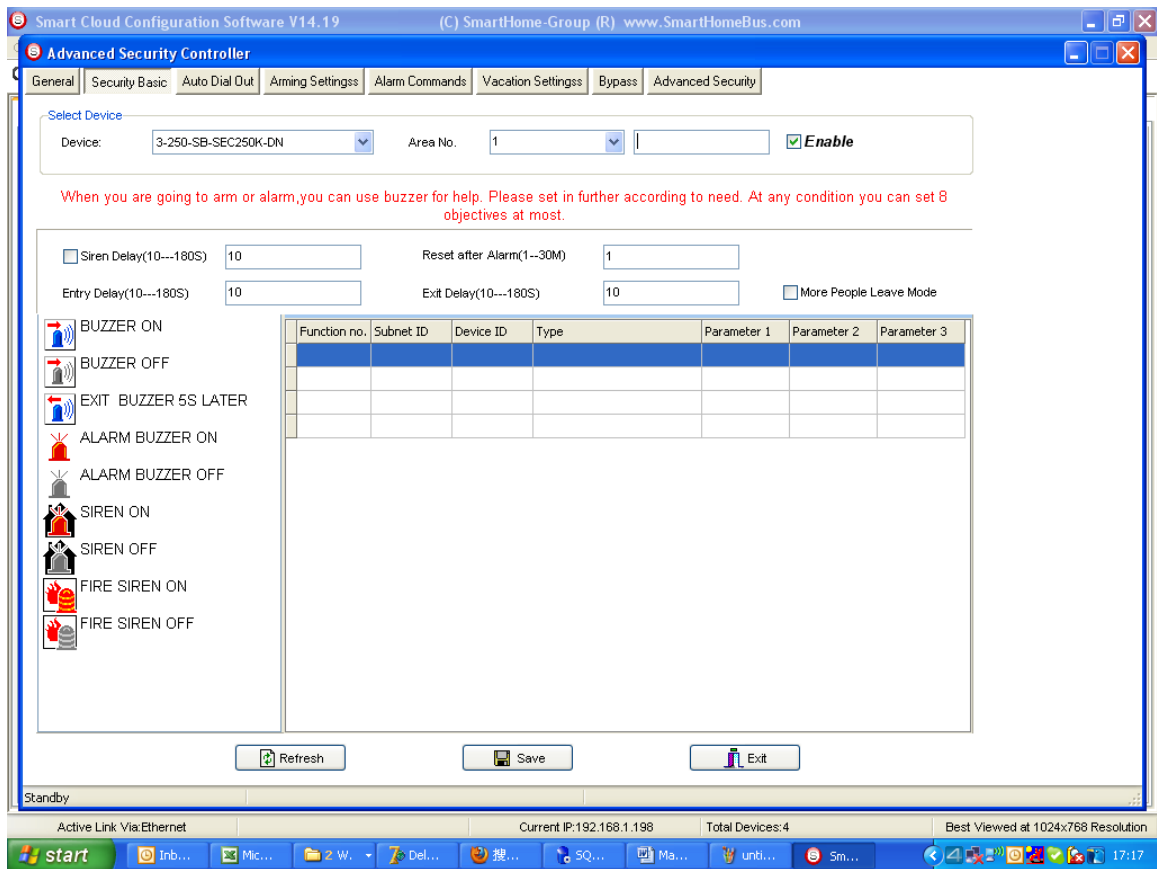
14. Security

Select table **Security**

- AppleTVInZone
- Camera
- CentralHVAC
- CentralHVACCommands
- CentralLights
- CentralLightsCommands
- CommandTypeDefinition
- DVDInZone
- HVACInZone
- HVACSetUp
- LightInZone
- LightTypeDefinition
- MacroButton
- MacroCommands
- MoodCommands
- MoodIconDefinition
- MoodInZone
- ProjectorInZone
- SATCategory
- SATChannels
- SATInZone
- ScheduleCommands
- Schedules
- Security**
- ShadeIconDefinition
- ShadeCommands

Database	SQL	Data	Design	DDL
Click here to define a filter				
RecNo	ZoneID	SubnetID	DeviceID	
1	1	1	222	

ZoneID: this is the zone ID for Security mould



Subnet ID,Device ID: Address of Security Module

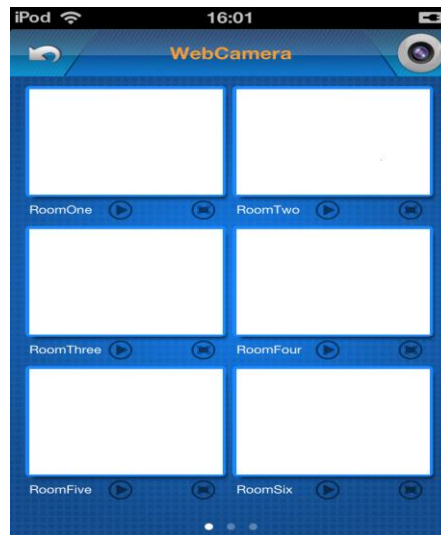
15. Camera

15.1 Web camera

Select table **Camera**

RecNo	CameraID	Name	URL	SequenceNo
1	1	OutSide	http://121.12.130.155:8080	10
2	2	DoorWay	http://webcam1.vilhelmina.se/view/index.shtml	11
3	3	BedRoom	http://80.75.240.35/view/index.shtml	12
4	4	Grage	http://www.novascotiawebcams.com/halifax/waterfront.html	13
5	5	Garden	http://http://snoop1.mie.rhod.uc.edu/view/view.shtml	14
6	6	Kichen	http://80.75.240.35/view/index.shtml	15
7	7	MeetingRM	http://circlecsm.erskine.edu/view/view.shtml	16
8	8	RoomOne	http://www.webworldcam.com/webcam-index.php?var=3992&site=http://cam.sheraton-tiranaview.com/view_live1.jpg	1
9	9	RoomTwo	http://ci.wrl.unsw.edu.au/argus/rainbow/latest/c4.snap.jpg	2
10	10	RoomThree	http://www.mestovolary.cz/video/obrazek_velky.jpg	3
11	11	RoomFour	http://www.webworldcam.com/webcam-index.php?var=10492&site=http://	4

CameraID : To mark which camera
 URL: the URL of camera
 SequenceNo: to range the order of camera



15.2 Camera from Foscam

Camera from Foscam is designed for end user, No need to use any programming tool,



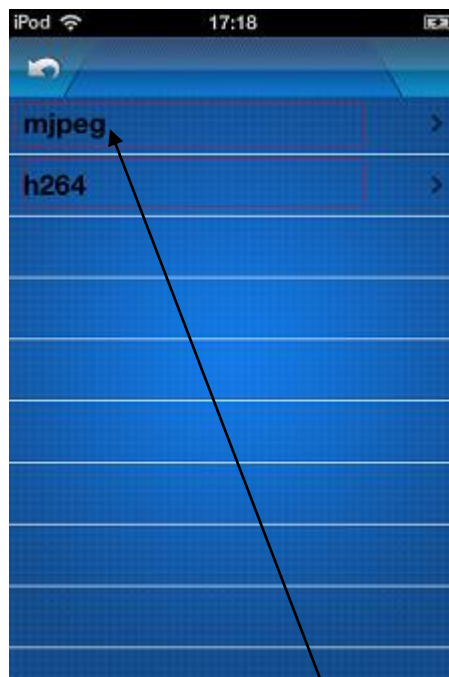
Go to Camera which is in “ Central Control” above.



Click “Foscam” above



Click setting button



Get camera video code type

1 to see the device document of Foscam

2 go to Foscam web to see the code type by camera Model

<http://cn.foscam.com>

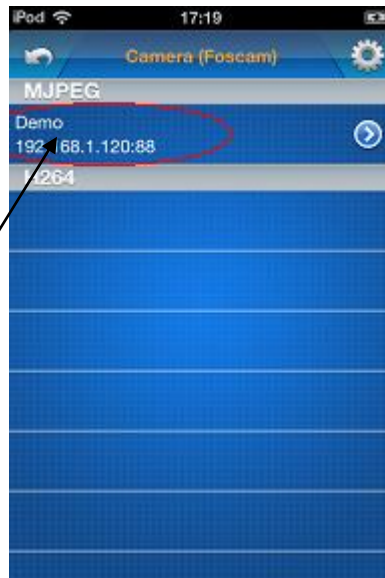
15.2.1 Adding video code type mjpeg camera Press

You can know camera ip \ username\ password\ port by reading “Quick Installation Guide” from Foscam.



The screenshot shows a mobile app interface for adding a device. At the top, it says 'Add Device(mjpeg)'. Below this is a form with the following fields: 'DeviecName: Demo', 'Ip: 192.168.1.120', 'UserName: admin', 'Password: admin', and 'WebPort: 88'. At the bottom of the form are two buttons: 'Save' and 'Cancel'.

Input the current camera name\ ip\ UserName\ Password\ WebPort.
Then save.



Press
App will connect to the Camera less than 10 seconds .



15.2.2 Adding video code type is H264 camera

Press h264



iPod 18:17

Add Device(h264)

UID:	DemoH264
DeviecName:	Foscam
Ip:	192.268.1.156
UserName:	admin
Password:	admin
WebPort:	1030
MediaPort:	1034
StreamType:	MainStream

Save Cancel

You can know camera ip \ username \ password \ Mediaport \ webPort \ StreamType
by reading "Quick Installation Guide" from Foscam.

Then save

iPod 18:27

Camera (Foscam)

MJPEG

Demo
218.17.160.187:1030

H264
Foscam
192.268.1.156:1030

15.2.3 Edit camera

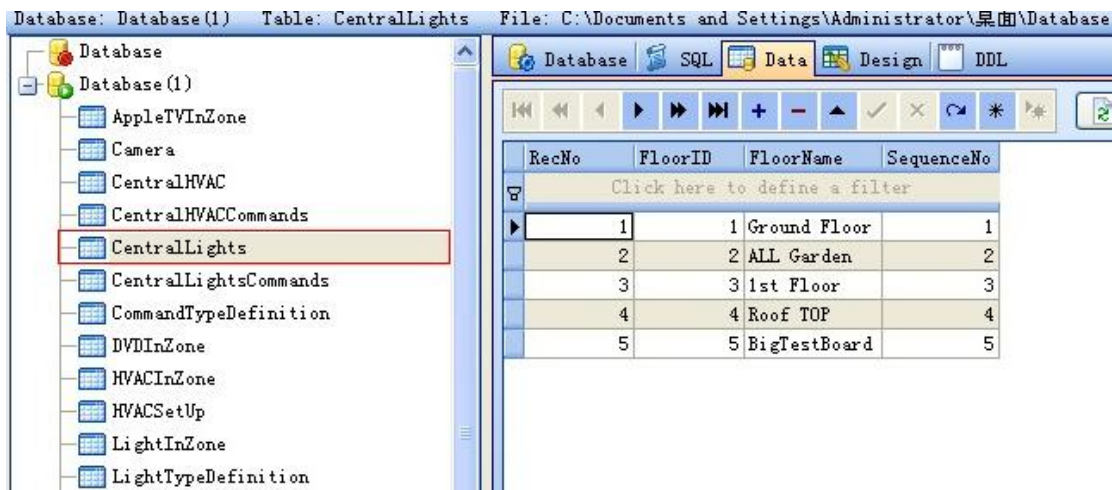
Press button



16. Central control lights

16.1 Add central control light

Select table: **CentralLights**



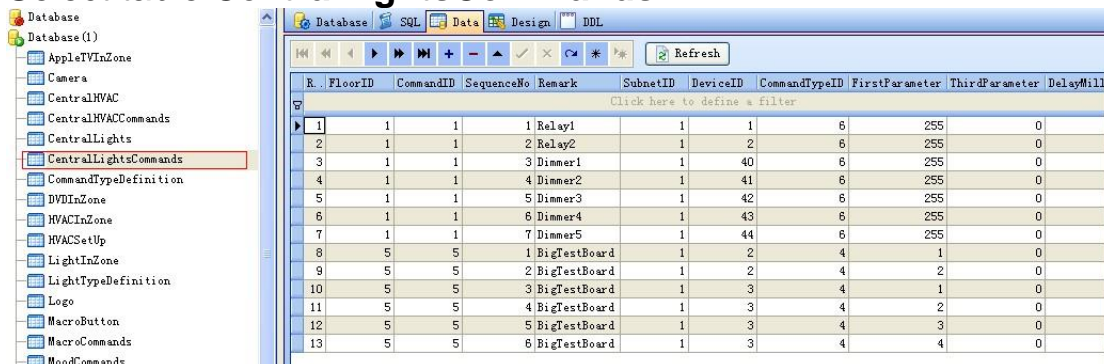
FloorID: used for take commands in table **CentralLightsCommands**

FloorName: show Floor name in iphone app

SequenceNo : Central control lights will be displayed according to the SequenceNo

16.2 Add commands for control lights

Select table **CentralLightsCommands**



Add commands for the control lights.

For the definition of CommandTypeID, please see above

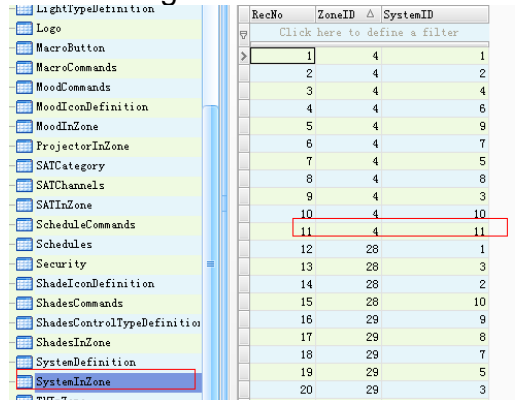
17 Fan

17.1 Add fan system in table 'SystemInZone'

The systemID of Fan is 11

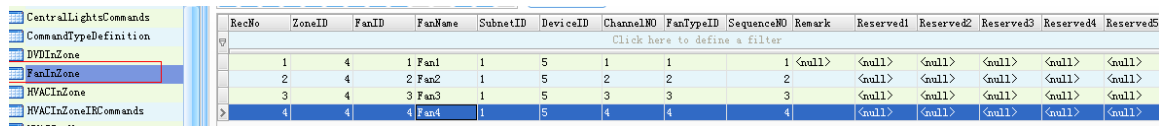
(take zoneID 4 for eg.)

As the image below:



RecNo	ZoneID	SystemID
1	4	1
2	4	2
3	4	4
4	4	6
5	4	9
6	4	7
7	4	5
8	4	8
9	4	3
10	4	10
11	4	11
12	28	1
13	28	3
14	28	2
15	28	10
16	29	9
17	29	8
18	29	7
19	29	5
20	29	3

17.2 Add Fan control Module to FanInZone



RecNo	ZoneID	FanID	FanName	SubnetID	DeviceID	ChannelNO	FanTypeID	SequenceNO	Remark	Reserved1	Reserved2	Reserved3	Reserved4	Reserved5
1	4	1	Fan1	1	5	1	1	1	<null>	<null>	<null>	<null>	<null>	<null>
2	4	2	Fan2	1	5	2	2	2	<null>	<null>	<null>	<null>	<null>	<null>
3	4	3	Fan3	1	5	3	3	3	<null>	<null>	<null>	<null>	<null>	<null>
4	4	4	Fan4	1	5	4	4	4	<null>	<null>	<null>	<null>	<null>	<null>

Explain of the field

FanID :Used to mark which fan

FanName:Fan display name


SubnetID:Fan module subnetID




DeviceID:Fan module device ID

ChannelNO:The channel number in Fan module of current fan

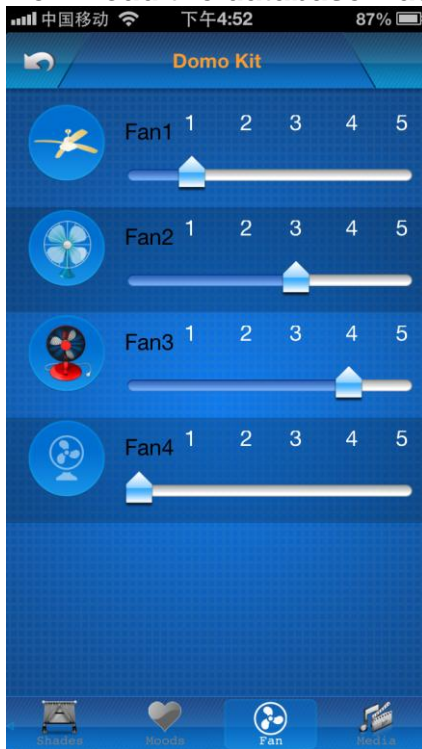
FanTypeID:Used to Display different icon for current fan

FanTypeID detail table

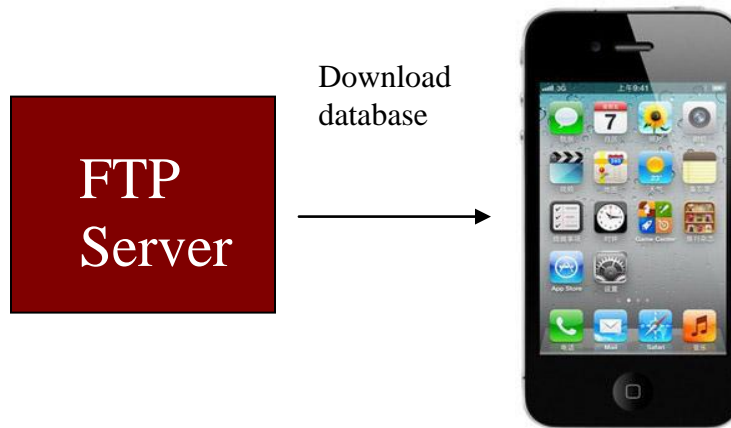
FanTypeID	Icon
1	

2	
3	
4	

Download the database was edited, restart your app .



20. Download database to
IPHONE/IPAD from FTP Server



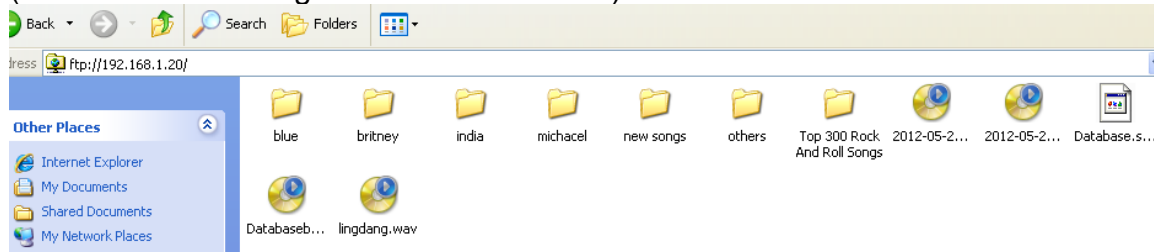
Step1: Copy the database **Database.sqlite3** that you have programmed to the FTP Server

(Please do not change the database name)



Step 2: paste the database file on the root directory of FTP server

(Please do not change the database name)



Step 3: Download database to IPHONE/IPAD from FTP Server

To go to settings page, click the G4 icon on top right corner on main page



Press this G4 icon



Click the button **Database Upload & Download**



Make sure the FTP Server Address and username and password are accurate

Carrier 11:49 PM

Database Upload & Download

FTP Server Settings

FTP Server Address
i.e. ftp://192.168.1.20

Username: Password:

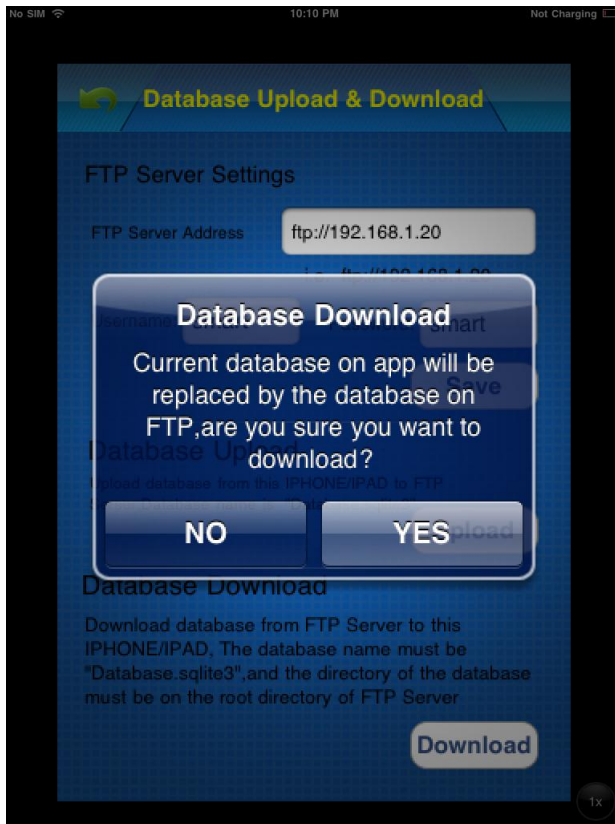
Database Upload

Upload database from this IPHONE/IPAD to FTP
Server.Database name is "Database.sqlite3"

Database Download

Download database from FTP Server to this
IPHONE/IPAD. The database name must be
"Database.sqlite3", and the directory of the database
must be on the root directory of FTP Server

Click button **Download** above



When the database is downloaded, the Smart-BUS IPHONE App needs to be restarted.